

f902/32 Shepherd Street, Liverpool, NSW, 2170



Apartment For Sale

Wednesday, 14 August 2024

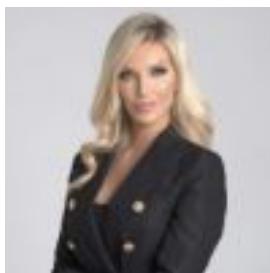
f902/32 Shepherd Street, Liverpool, NSW, 2170

Bedrooms: 2

Bathrooms: 2

Parkings: 1

Type: Apartment



Ivana Robinson
0296082222

2 BEDROOM PLUS MEDIA ROOM - STUNNING RIVER VIEWS!

Welcome to this elegant and modern 2-bedroom apartment with media room, which offers a lifestyle of comfort and convenience in the vibrant center of Liverpool. With its unbeatable location being The Foundry, this apartment offers stylish design, and top-notch amenities.

Designed by award-winning architects SJB, The Foundry forges the way for a design-led community of residents who seek out contemporary ways of living. This is an opportunity you won't want to pass up!

Features include:

- Spacious open plan living and dining open to large entertainers balcony with spectacular river views
- Sleek kitchen with premium cabinetry, gas cooktop, steel appliances and dishwasher
- Main bedroom with ensuite and ample storage
- Additional bedroom with extensive wardrobe storage
- Media room with stunning river views - could be used as a third bedroom
- Split system air conditioning, downlights throughout
- Internal laundry
- Exclusive access to the building's exceptional facilities, including a fitness center, rooftop terrace, a private pool and secure basement parking.
- Footsteps away from the Papermill dining precinct
- Walking distance to Liverpool Train Station, Westfields Liverpool and close distance to hospitals
- Close proximity to m5 and m7 motorways

Disclaimer: All information contained here thin is gathered from sources we believe reliable. We have no reason to doubt its accuracy, however we cannot guarantee it. All interested parties should make and rely upon their own enquiries.