

G20/121A Jerralong Drive, Schofields, NSW 2762

Apartment For Sale

Sunday, 23 June 2024



G20/121A Jerralong Drive, Schofields, NSW 2762

Bedrooms: 1

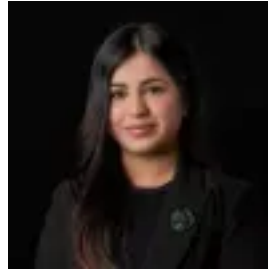
Bathrooms: 1

Parkings: 1

Type: Apartment



Amit Kumar
0288964336



Siya Sachdeva
0288964336

For Sale \$399,000

Situated in one of the most desirable areas of Schofields, this contemporary studio apartment offers an exceptional opportunity for homeowners and investors alike. Located within the premium Galungara Public School catchment area and just a five-minute walk to Schofields Train Station and Schofields Village Shopping Centre, this property provides unmatched convenience and comfort. Upon entering, you are greeted by an open-plan living, dining, and kitchen area that has been thoughtfully designed to maximize space and functionality. The abundance of natural light enhances the spacious feel, while the seamless transition through glass sliding doors to the expansive courtyard creates an ideal setting for both indoor and outdoor entertaining. This blend of comfort and style makes it perfect for relaxing or hosting guests. The kitchen is a modern delight, boasting high-quality stainless steel appliances, including a cooktop, 600mm oven, dishwasher, and built-in microwave. The mirrored splashbacks and marble stone benchtops add a touch of elegance, while ample storage ensures all your culinary needs are met. The studio features a generously sized bedroom area with a large built-in wardrobe, providing ample storage space. The private bathroom is modern and stylish, complete with floor-to-ceiling tiles, offering a luxurious retreat within the apartment. Features you will love:- LED lights throughout- Ducted air conditioning- Open-plan layout with abundant natural light- Expansive courtyard for indoor-outdoor living- One car space plus a spacious storage cage- Visitor parking is available- ALAND build- Secure complex- Video intercom- Access to a BBQ area and children's playground in the common area Location highlights:- Short walk to the ever-popular Glory Park- 1-minute drive and a 5-10 minute walk to Schofields Train Station and shopping centre- 3-minute drive and a 10-minute walk to the premium Galungara Public School- 6-minute drive to Tallawong Metro Station and on-demand bus service available- 5-minute walk to Alex Avenue Medical Centre- Short walk to multiple childcare centres on Alex Avenue- 5-minute walk to St Joseph's Primary School on Alex Avenue- 9-minute drive to Rouse Hill Town Centre and the upcoming Rouse Hill Hospital- Surrounded by multiple parks- Reasonable commute to Sydney CBD Don't miss out on this remarkable opportunity to own a modern studio apartment in the heart of Schofields, offering an exceptional lifestyle of convenience and comfort. Disclaimer: All information contained herein is obtained from property owners or third-party sources which we believe are reliable. We have no reason to doubt its accuracy, however, we cannot guarantee it. All interested person/s should rely on their enquiries.