

M Dandenong Road, Clayton, VIC, 3168



Apartment For Sale

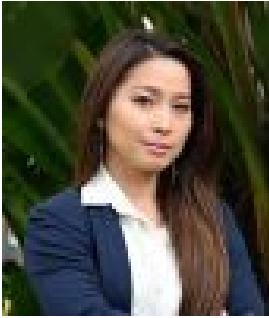
Monday, 19 August 2024

M Dandenong Road, Clayton, VIC, 3168

Bedrooms: 1

Bathrooms: 1

Type: Apartment



Li Ying Quan
0402660984

Gated community connected to secure 4200sqm of private open space with resort style amenities!

Whether you are an owner occupier or an astute investor this amazing opportunity is not to be missed. You will love the enriched gated community being offered here, being able to connect and freely move around a wonderful and secure 4,200sqm of private open space whilst accessing resort style amenities such as a super large heated swimming pool, tennis court, BBQ and dining area for large groups or watch the kids play on the playground or bask in the sun in the large grass area whilst enjoying the magnificent views with family and friends.

Smart 1, 2 & 3 bedroom residences with exclusive amenities and every convenience at your door. M-City will be a landmark precinct on a scale previously unseen in the area; connected to 60 specialty stores including Woolworths, K-Mart, cinema, restaurants, childcare, medical facilities, an international hotel and premium offices. Rising from a prominent corner on Dandenong Road (Princess Highway) and Blackburn Road, this new community offers a world-renowned education and science precinct on its doorstep and the CBD only 20 minutes away.

This coveted location in the heart of Monash places it within close proximity to Melbourne's top minds in medicine, education, research and science. Walking distance from M-City, Monash University is one of the top universities in the country, ranked 5th in Australia and 74th in the world.

A new way of living in a vibrant master plan. Smart 1, 2 & 3 bedroom residences with exclusive amenities and every convenience at your door. M-City will be a landmark precinct on a scale previously unseen in the area; connected to 60 specialty stores including Woolworths, K-Mart, cinema, restaurants, childcare, an international hotel and premium offices.

Rising from a prominent corner on Princess Highway and Blackburn Road, this new community offers a world-renowned education and science precinct on its doorstep and the CBD only 20 minutes away.

This coveted location in the heart of Monash places it within close proximity to Melbourne's top minds in medicine, education, research and science. Walking distance from M-City, Monash University is one of the top universities in the country, ranked 5th in Australia and 74th in the world.

Disclaimer: We have in preparing this document used our best endeavours to ensure that the information contained in this document is true and accurate, but accept no responsibility and disclaim all liability in respect to any errors, omissions, inaccuracies or misstatements in this document. Prospect purchasers should make their own enquiries to verify the information contained in this document. Purchasers should make their own enquiries and refer to the due diligence check-list provided by Consumer Affairs. Click on the link for a copy of the due diligence check-list from Consumer Affairs. <http://www.consumer.vic.gov.au/duediligencechecklist>