

B102/819 New Canterbury Road, Dulwich Hill, NSW

STONE

2203

Apartment For Sale

Thursday, 7 March 2024

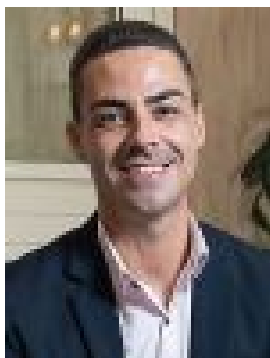
B102/819 New Canterbury Road, Dulwich Hill, NSW 2203

Bedrooms: 1

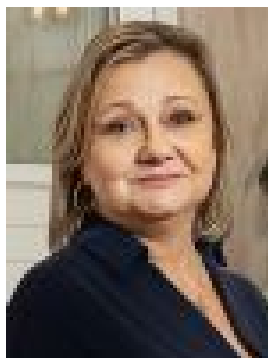
Bathrooms: 1

Parkings: 1

Type: Apartment



Chris Keane
0497102114



Diane Shipley
0434808385

Contact Agent

Set in a popular and well-maintained, architecturally designed building, this well-proportioned 1-bedroom apartment is well placed to enjoy an elevated peaceful outlook. This ultra-convenient property offers quality living that is within easy reach of cafes, transport, shops and parks.*North facing with ultra private leafy outlook* Contemporary kitchen featuring stainless steel appliances and stone bench tops* Ducted air conditioning, internal laundry* Spacious bedroom with built-ins* Lift access to a secure car space* Short stroll to Yeo park, Dulwich Hill village & Hurlstone Park village* Moments away to Light rail, trains and buses* Extra-large disability car space and storage cage on title. *Level access to lift. *All information contained herein is gathered from sources we consider to be reliable. However, we cannot guarantee its accuracy and interested persons should rely on their own enquiries. For more information or to arrange an inspection, please contact Chris Keane on 0497 102 114 or Diane Shipley on 0414 995 327.