

# Black Wattle Estate - 4056 Giinagay Way, Urunga, NSW 2455

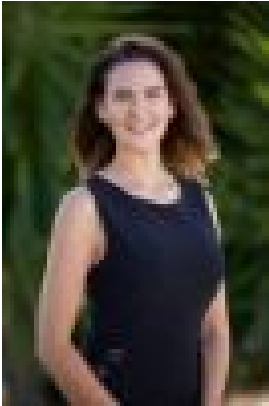
## Residential Land For Sale

Friday, 19 January 2024

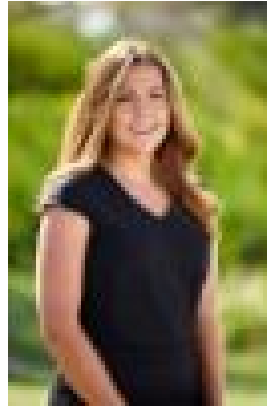
Black Wattle Estate - 4056 Giinagay Way, Urunga, NSW 2455

Area: 600 m2

Type: Residential Land



Andree Cardow  
0467519036



Lyndell Cardow  
0402852304

## **Selling Now from \$385,000**

Cardow & Partners are proud to present one of the most anticipated land releases in Urunga, Black Wattle Estate. An exciting new residential development opportunity to build your dream home with blocks ranging from 600sqm. The master planned community is surrounded by natural bushland, central parks, extensive bike paths & walking trails, making this a highly desirable location for families, retirees and investors. Situated 20 minutes drive from bustling Coffs Harbour & Bellingen, or a short 5 minute drive to Urunga's shopping village, pristine beaches, Kalang River & golf course. Start to enjoy everything our relaxed coastal lifestyle has to offer. With level building blocks in short supply but strong demand, be quick to secure yours today. Inspections Available by Appointment. Enquire today to receive your sales folder with further block details. - Stage 1 consists of approx 42 residential housing blocks - Excellent level building pads, ready for construction - Most with 19m + frontages - Exchange on a 5% deposit. - House & Land Packages available - Choose your own builder - Underground Power, Town Water, Sewer & NBN available - Local developers with over 40 years experience delivering innovative communities

Stage 1 - Selling Now from \$385,000 <https://blackwattleestate.com.au/>