

# C505/12 Paul Street, Zetland, NSW 2017

CENTURY 21. Masterpiece

## Apartment For Sale

Tuesday, 19 December 2023

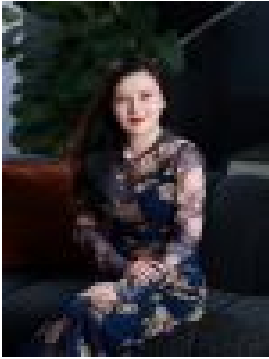
C505/12 Paul Street, Zetland, NSW 2017

**Bedrooms: 2**

**Bathrooms: 2**

**Parkings: 1**

**Type: Apartment**



Cathy Yuan Tian  
0294278999

## For Sale \$900,000 to \$990,000

The culmination of a stunning design and superb location, this apartment scores highly on comfort and liveability in the heart of Zetland. Designed by award-winning architectural group SJB, it promises an enviable lifestyle on the cusp of Zetland. This readymade opportunity is just footsteps from East Village shopping centre, dog-friendly parklands, popular cafes and Virgin Active, and you could enjoy the fresh air with green parkland and cycle paths from Green Square through the neighbouring suburbs of Surry Hills and Alexandria, and the stunning Eastern beaches, including Bondi and Coogee. You will find an excellent balance between living, working, and playing in one of the Australia's most thriving communities. Features:- Spacious living and dining area flows onto good size balcony- 2 bedrooms with built-ins, including Master with ensuite- Brand new timber floor- Stylish galley kitchen with Caesar stone bench tops and European appliances, gas cooking and dishwasher- Timber flooring throughout, Ducted air conditioning, internal laundry with dryer and ample storage- Stylish fully tiled bathroom with bathtub- Internal laundry with dryer- Security car park in basement with storage cage- Security building with intercom access, building manager on site- NBN internet- Rooftop garden with BBQs, expansive undercover area and sweeping district to city skyline views Location:- Short stroll to East Village, Virgin Active, eateries, cafes & restaurants- 2 mins walk to Woolworths Metro/ BWS liquor store- 2 mins walk to Green Square State-of-the-Art Library- 3 mins walk to bus stops & Green Square Station, 1 stop to Sydney CBD- Bus stop to UNSW, USYD, Taylors College, inner-city and eastern suburbs- 4 kms to Sydney International and Domestic Airports, close proximity to the 2024 Waterloo Metro Station- 1 min walk to the up and coming Greensquare Public School (to be completed) and Early Learning Centre- To be completed parkland at doorstep- Close to newly opened Gunyama Park Aquatic Centre Property size: Strata area: 98 sqm Floor area: 82 sqm Car spot: 16 sqm Property outgoings: Strata levy: Approx. \$1044/quarter Water Rate: Approx. \$165/quarter Council Rate: Approx. \$295/quarter Please contact Cathy 0434 073 899 for details. Disclaimer: Photos, images and general property description is provided as a convenience, however, may not represent all aspects of the property advertised. Information contained above should not be relied upon and prospective purchasers should make their own enquiries and seek legal advice in respect of the property.