

1/35 Panorama Crescent, Wentworth Falls, NSW 2782



Duplex/Semi-detached For Rent

Thursday, 11 July 2024

1/35 Panorama Crescent, Wentworth Falls, NSW 2782

Bedrooms: 3

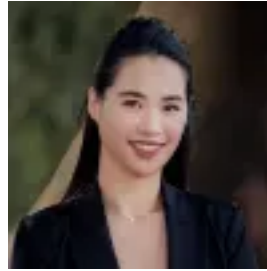
Bathrooms: 2

Parkings: 2

Type: Duplex/Semi-detached



Connor Gonios
0497839393



Jennifer Howard
0420690089

\$590 per week

Spacious and modern duplex available for rent featuring 3 generous bedrooms, each with built-in wardrobes. The large master bedroom includes an ensuite spa for added luxury. There are 2 neat bathrooms and a modern kitchen with solid timber cabinets and two built-in pantries. The formal lounge room opens to a balcony with mountain views and connects seamlessly to the dining and family rooms. Additional highlights include an impeccable ensuite in the master bedroom, a lock-up garage for two cars plus an additional car space, and a dedicated backyard with a garden. The property is conveniently located near shops and schools, and features double brick construction with concrete floors for temperature control. Also included is a large storage area next to the garage, complete with a toilet, shower, gas outlet for heating, and electricity.