

140a Wangee Street, Greenacre, NSW 2190



Duplex/Semi-detached For Sale

Monday, 1 July 2024

140a Wangee Street, Greenacre, NSW 2190

Bedrooms: 4

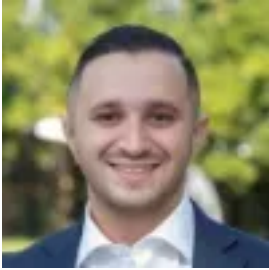
Bathrooms: 2

Parkings: 2

Area: 465 m2

Type:

Duplex/Semi-detached



Omar Saadi

0286685754

AUCTION

Revealing an array of lounge and dining zones across two flawlessly appointed levels, this north-facing residence provides a comfortable base for families seeking space to live, grow and entertain. Embraced with elegant bay windows, polished tiles and elevated leafy views, the home's interiors extend to a landscaped, private and enclosed backyard. The readymade property is set on a tree-lined street, just 500m from Parry Park and coffeehouses. - Double-door entry to an integrated lounge/dining area wrapped in highlight windows - Elevated pergola-covered terrace creates an idyllic setting to entertain/gather guests- Additional open-air courtyard oversees the enclosed, private and child-friendly yard- Well-maintained kitchen features stainless steel gas appliances and a breakfast bar- Three good-sized bedrooms all fitted with built-in robes, master bed with a balcony- Master retreat/bedroom also offers a large walk-in robe, an ensuite and a sitting area- Stylish bathroom reveals floor-to-ceiling tiles, ducted air-conditioning and downlights- Comfortable family home with scope to add personal touches, high rental returns- Single lock-up garage, adjoining walk-in storage and internal access, off-street parking- Located just 1.6km from Greenacre village shops, quality schools and places of worship

DISCLAIMER: While PACE Property Agents have taken all care in preparing this information and used their best endeavours to ensure that the information contained therein is true and accurate, but accept no responsibility and disclaim all liability in respect of any errors, inaccuracies or misstatements contained herein. PACE Property Agents urges prospective purchasers to make their own inquiries to verify the information contained herein.