

16A Crawford Place, Beacon Hill, NSW 2100

Duplex/Semi-detached For Rent

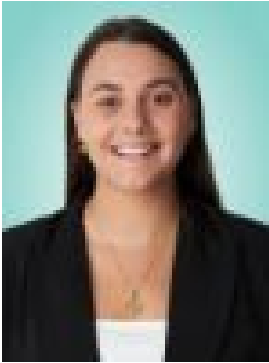
Saturday, 29 June 2024

16A Crawford Place, Beacon Hill, NSW 2100

Bedrooms: 1

Bathrooms: 1

Type: Duplex/Semi-detached



Natasha Burke

0290738888

\$600 Per Week - Incl. Water & Electricity

Spacious one bedroom lower duplex in a quiet cul-de-sac street features an open-plan lounge/dining-room opening up to an under covered patio area with a tropical relaxing outlook. Property Features: • Stylish open plan kitchen with stainless steel Bosch appliances including dishwasher, fridge, and microwave • Enclosed laundry with combined washing machine/dryer • Bedroom with a walk in wardrobe and an additional free standing wardrobe. • Close to beaches and amenities - Warringah Mall, schools, Northern Beaches Hospital etc. • Partially Furnished - inclusions: Lounge, Dining table, Coffee Table & Artwork. • Sorry no pets • On street parking • 6 month lease term to begin with • Exclusions: pool and garage *PLEASE NOTE* It is important that you enquire to register for an inspection, so we are able to advise you of time changes, cancellations and price reductions.