

2/3 Ashton Street, Metford, NSW 2323

Thompson,
Clarke

Duplex/Semi-detached For Rent

Tuesday, 2 July 2024

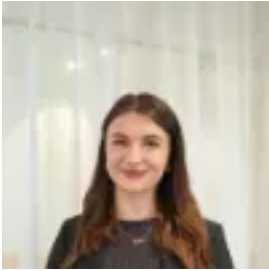
2/3 Ashton Street, Metford, NSW 2323

Bedrooms: 3

Bathrooms: 2

Parkings: 1

Type: Duplex/Semi-detached



Ella Casini

0240863800

\$620 Per Week

Ideally positioned close to the New Maitland Hospital, Greenhills shops and easy access to the freeway comes this immaculate 3 bedroom residence. The home includes: *3 bedrooms in total, master with walk in robe and ensuite. * Open plan living/dining space which flows effortlessly from the kitchen.* Split system air-conditioning.* Undercover alfresco.* 1 car lockup garage. * Low-maintenance yard. Our agency accepts applications via 2Apply, click APPLY NOW or enquire to receive a link for application. To book a time to inspect, simply click on Book an Inspection Time or Email Agent to book instantly using our online system. By registering, you will be informed of any updates, changes or cancellations for your appointment.