

26A Sixth Avenue, Condell Park, NSW, 2200



Duplex Semi-detached For Sale

Friday, 9 August 2024

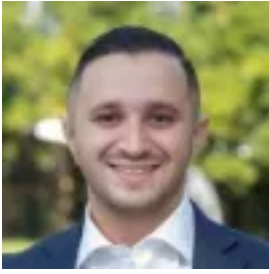
26A Sixth Avenue, Condell Park, NSW, 2200

Bedrooms: 5

Bathrooms: 5

Parkings: 2

Type: Duplex Semi-detached



Omar Saadi

0286685754

Brand new designer home promises a lifestyle of luxury and comfort living with in ground pool

Exuding contemporary elegance with warm, inviting details, this brand new residence showcases an exceptional blend of classic modern design and Scandinavian charm. Highlighted by exposed brick accents and walls of glass, its fluid interiors seamlessly transition to an alfresco dining area and a north-facing swimming pool. The property promises a lifestyle of luxury and comfort, located just 1.0km from Condell Park Shopping Centre.

- Finished to the highest specifications with supreme finishes and high-end inclusions
- Impressive entry foyer leads to a multi-function living/dining area with outdoor flow
- Flawless outdoor flow to an elevated entertainers 'terrace with a built-in barbecue
- Swimming pool and child-friendly yard captures northern light for day-round sun
- Island kitchen equipped with bespoke stone, a walk-in pantry and steel gas fittings
- Five bedrooms, two with ensuites, master bed boasts a walk-in robe and balcony
- Designer bathroom reveals floor-to-ceiling tile, distinct wet zone with a tub/shower
- Ducted air-conditioning, gold hardware, minimalist LED lights, tile and timber blend
- Single automatic garage, internal access, landscaped frontage, off-street parking
- Easy 12-minute walk from public transport, dining, coffee houses and pharmacies

DISCLAIMER: While PACE Property Agents have taken all care in preparing this information and used their best endeavours to ensure that the information contained therein is true and accurate, but accept no responsibility and disclaim all liability in respect of any errors, inaccuracies or misstatements contained herein. PACE Property Agents urges prospective purchasers to make their own inquiries to verify the information contained herein.