

6A Madang Street, Holsworthy, NSW, 2173

Duplex Semi-detached For Sale

Wednesday, 2 October 2024

DEMIANS
ESTATE AGENTS

6A Madang Street, Holsworthy, NSW, 2173

Bedrooms: 4

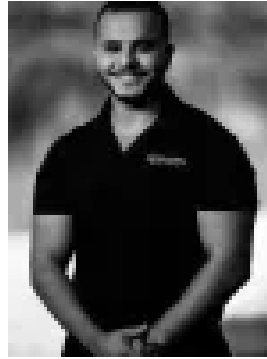
Bathrooms: 2

Parkings: 1

Type: Duplex Semi-detached



Michael Demian
0404601084



Mark Demian
0404601084

Only 4 years young, and sits in a position that goes off with an absolute bang. Ladies and Gents, this is number 6a Madang.

This benchmark residence spans two meticulously crafted levels, showcasing modern luxury and designer finishes throughout.

With two distinct living areas, four elegantly appointed bedrooms upstairs, and an additional bedroom downstairs, this four-year-old family home is ideal for a growing family seeking effortless, care-free living.

Nestled in one of Holsworthy's most sought-after locations, this home offers unbeatable convenience - just moments from Holsworthy train station, close to Wattle Grove shopping village, St. Mark's Coptic Orthodox College, public schools, and a short drive to Liverpool CBD.

The striking facade and commanding presence create instant street appeal, complemented by a long driveway, manicured gardens, and a single garage for additional parking.

From the moment you step inside, you'll be captivated by the seamless front-to-rear flow, complemented by fresh paint, sleek downlights, luxurious tiles, and an elegant colour scheme that exudes sophistication throughout.

Continue to the heart of the home, where the open-plan living, kitchen and dining area serves as the perfect centrepiece for entertaining, effortlessly extending to the outdoor living space.

The high-end chef's kitchen has been designed with no expense spared, featuring premium stainless steel appliances, stone waterfall island benches, soft-close drawers, a tiled splashback, and a large walk-in pantry.

Entertain year-round and host gatherings with ease in the expansive outdoor space, featuring a spacious undercover alfresco area that overlooks a large, secure yard. Children and pets can play freely, and with wide side access, there's ample room to install a pool without sacrificing space.

Downstairs, you'll find a fifth bedroom, a stylish internal laundry with ample storage, and a luxury powder room boasting a floating vanity and floor-to-ceiling tiles.

Walk up the wide timber staircase to the upper level, where the oversized master suite awaits, complete with his-and-hers walk-in robes, a deluxe ensuite with an oversized shower, and a private balcony for quiet retreat.

The remaining bedrooms are generously sized with built-in wardrobes, sharing a luxurious family bathroom that includes a large bathtub, separate shower, and floating vanity.