

E224/1 Herlina Crescent, Rouse Hill, NSW 2155

MANOR

Unit For Sale

Tuesday, 6 February 2024

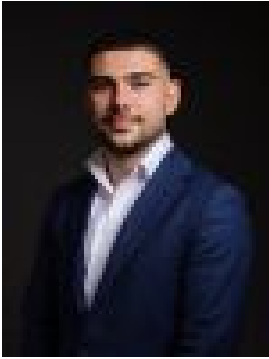
E224/1 Herlina Crescent, Rouse Hill, NSW 2155

Bedrooms: 2

Bathrooms: 2

Parkings: 1

Type: Unit



Michael Karanicolas
0296395833

Guide \$570,000 - \$620,000

Conveniently positioned within close proximity to all life's amenities, this two bedroom apartment is ideal for first home buyers, investors, executive couples and downsizers. Offering a modern and open play floorplan drenched in natural light, in addition to a covered balcony that's ideal for entertaining all year round. Located within close proximity to Rouse Hill Town Centre Shops, Metro Station, City buses, family-friendly parks, cafes, quality local schools, childcare centres and so much more - this location is sure to impress! Additional features include: * Open plan living and dining area * Undercover balcony area * Modern kitchen with stainless steel oven, gas cooktop, rangehood and dishwasher * Two spacious bedrooms with built-in robes to both and an ensuite to the master * Huge family bathroom with semi-framless shower * Internal laundry cupboard * Low maintenance timber flooring * Single car space with storage area Disclaimer: The above information has been gathered from sources that we believe are reliable. However, we cannot guarantee the accuracy of this information and nor do we accept responsibility for its accuracy. Any interested parties should rely on their own enquiries and judgment to determine the accuracy of this information for their own purposes. Images are for illustrative and design purposes only and do not represent the final product or finishes.