

8/24 Lisson Grove, Hawthorn, Vic 3122

Flat For Rent

Monday, 8 July 2024



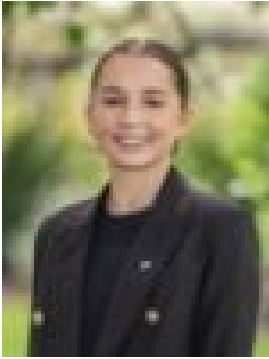
8/24 Lisson Grove, Hawthorn, Vic 3122

Bedrooms: 2

Bathrooms: 1

Parkings: 1

Type: Flat



Thea Toogood
0459555241

\$450 per week

Looking for something close to transport & shops? This two-bedroom apartment is set on a large leafy block and is in easy walking distance to Glenferrie Road (450m). Comprising of two bedrooms both with built in robes, spacious lounge with heating and kitchen with gas cooking. Features:- Freshly painted- Brand new carpet- off street parking for one- good cupboard space- small number of close neighbours in immediate block and spacious communal grounds for recreation and enjoying the summer sun. Even Glenferrie Station is only 1.1km away or enjoy the abundance of cafes and restaurants along Glenferrie Road or even by Riversdale Road 600 metres, if you have further study in mind even Swinburne University is close (1.2km). *To register to inspect please click "Virtual Tour" or "Book Inspection" so we can keep you informed of inspection times and changes. *Photo ID may be required at open for inspections.