

G02/268 Hawthorn Road, Caulfield, Vic 3162

Apartment For Rent

Saturday, 13 April 2024

G02/268 Hawthorn Road, Caulfield, Vic 3162

Bedrooms: 2

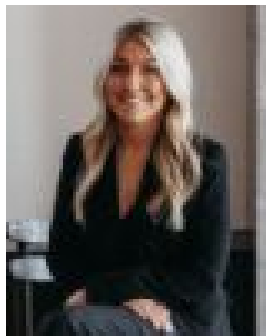
Bathrooms: 2

Parkings: 1

Type: Apartment



Jodi Sherr



Rachel Thompson
0391918161

\$700 per week

Located in the heart of Caulfield, don't miss your chance to live the high life and lap up the luxury in this boutique residence. This rear GROUND FLOOR, two bedroom, two bathroom apartment offers an elite standard of living in an unbeatable location in the new designer LUMA building. Effortless functionality of the open plan living features a kitchen with waterfall stone benches + splashback, brass fittings and quality Smeg appliances including built in dishwasher & gas cooking and pantry adjoined to the spacious living room with floor to ceiling windows and opens onto a large tiled & leafy courtyard. Two large bedrooms with mirrored robes, luxurious ensuite plus second central bathroom. Located in one of Melbourne's most sought after locations you are only minutes from Glenferrie Road/Glenhuntly Rd precinct with its attractive shopping strips including Malvern Central and a vast array of restaurants and cafes are just a short walk away, as well as Caulfield Park, Trams and Caulfield & Malvern train station. Features Include; Basement Car Parking Large Storage Cupboard Luxurious Brass look fittings Large European Laundry with storage & trough Ducted Split System Heating & Cooling Lift Access Engineered European Timber Oak Flooring Wool Carpets Video Intercom || **BOOK AN INSPECTION NOW ONLINE** || Click to book an inspection directly through the website and be updated with available appointment times. Register to confirm your chosen inspection time and to be notified of any changes. If times are not suitable - contact us to arrange alternative time.