

G13/129A Jerralong Drive, Schofields, NSW 2762



Sold Apartment

Sunday, 8 October 2023

G13/129A Jerralong Drive, Schofields, NSW 2762

Bedrooms: 3

Bathrooms: 2

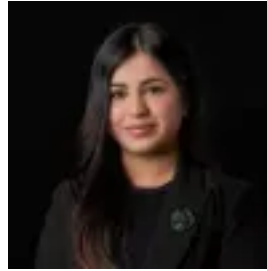
Parkings: 2

Area: 219 m2

Type: Apartment



Amit Kumar
0288964336



Siya Sachdeva
0288964336

\$745,000

Set in the most convenient locations of Schofields, located within the premium Galungarra Public School Catchment and a 5-minute walk to the Schofields Train Station and Schofields Village Shopping Centre, this premium ground-level apartment boasts 219 sqm internal area and is one of the best three bedroom units in Schofields, ideal for growing families and downsizers. The apartment has an ideal layout and location with an abundance of natural light with its spacious open-plan living and dining area which flows seamlessly through glass sliding doors to the extra-large courtyard, which creates a perfect blend of indoor and outdoor entertaining areas. The modern kitchen is well-appointed and features high-quality stainless-steel appliances, stone waterfall benchtops, glass splashbacks and a spacious pantry. The accommodation consists of three bedrooms which are great in size and feature built-in robes for all, not to mention a designated study area for those who work or study from home. The master retreat showcases its own ensuite, ensuring comfort and privacy for your convenience. Other features you will love:- Builder: ALAND- Built-in TV entertainment unit and additional cabinetry- Two car spaces plus a spacious storage cage- Visitor parking is available- Access to a BBQ area and children's playground in the common area, perfect for family gatherings- Secure complex- Video intercom- LED downlights- Separate study area, ideal for those who work or study from home. Location highlights:- Short walk to the ever-popular Glory Park- 1-minute drive and a 5-10 minute walk to Schofields Train Station and shopping centre- 3-minute drive and a 10-minute walk to the premium Galungarra Public School- 6-minute drive to Tallawong Metro Station and on-demand bus service available- 5-minute walk to Alex Avenue Medical Centre- Short walk to multiple childcare centres on Alex Avenue- 5-minute walk to St Joseph's Primary School on Alex Avenue- 6-minute drive to The Ponds Shopping Centre- 9-minute drive to Rouse Hill Town Centre and the upcoming Rouse Hill Hospital- Surrounded by multiple parks- Reasonable commute to Sydney CBD. With a convenient location that is second to none and features that will be enjoyed by your whole family, this is a home that you must see. For further questions or inquiries, contact Amit or Siya. Disclaimer: All information contained herein is obtained from property owners or third-party sources which we believe are reliable. We have no reason to doubt its accuracy, however we cannot guarantee it. All interested person/s should rely on their own enquiries.