

G14/129A Jerralong Drive, Schofields, NSW 2762



Apartment For Sale

Friday, 19 January 2024

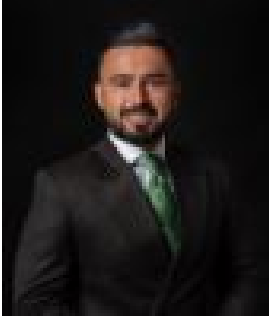
G14/129A Jerralong Drive, Schofields, NSW 2762

Bedrooms: 2

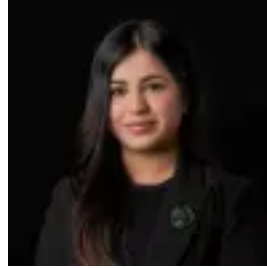
Bathrooms: 2

Parkings: 1

Type: Apartment



Amit Kumar
0288964336



Siya Sachdeva
0288964336

For Sale \$580,000 - \$620,000

Set in the most convenient locations of Schofields, within the premium Galungarra Public School catchment and short walking distance to the Schofields Train Station as well as Schofields Shopping Village, this premium ground-level apartment in a spacious internal area, and is ideal for growing families and downsizers. This home offers a welcoming atmosphere with open-plan living, dining and kitchen areas, making it the perfect space for entertainment. The apartment has an ideal layout and location with an abundance of natural light which flows seamlessly between spaces and out through to the balcony. The well-appointed kitchen features quality stainless steel appliances, marble stone benchtops with a waterfall to one side, a gas cooktop, a 60cm oven, a glass splashback, an eat-in breakfast bar and plenty of storage space. The accommodation consists of two well-sized bedrooms, both with built-in robes. The master bedroom showcases a private modern ensuite and both bathrooms feature floor-to-ceiling tiles. Features you will love:- LED lights throughout the home- Ducted air conditioning- Video intercom- One car space with a storage cage- Visitor parking is available- Secure complex- Access to a BBQ area and children's playground in the common area- Builder: ALANDLocation Highlights- Short walk to the ever-popular Glory Park- 3 minutes drive to Schofields Train Station and Schofields Shopping Village- 3 minutes drive to the premium Galungarra Public School- 6 minutes drive to Tallawong Metro Station and on-demand bus service available- 10 minutes walk to Alex Avenue Medical Centre- Short walk to multiple childcare centres on Alex Avenue- 10 minutes walk to St Joseph's Primary School on Alex Avenue- 9 minutes drive to Rouse Hill Town Centre and the upcoming Rouse Hill Hospital- Surrounded by multiple parks- Reasonable commute to Sydney CBDDisclaimer: All information contained herein is obtained from property owners or third-party sources which we believe are reliable. We have no reason to doubt its accuracy, however, we cannot guarantee it. All interested person/s should rely on their own enquiries.