

**G19/227 Hezlett Road, North Kellyville, NSW 2155**



**Apartment For Sale**

Monday, 23 October 2023

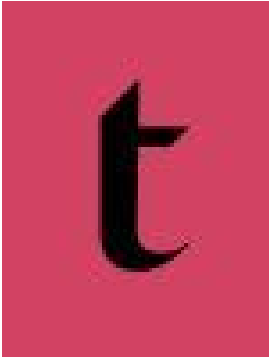
G19/227 Hezlett Road, North Kellyville, NSW 2155

**Bedrooms: 1**

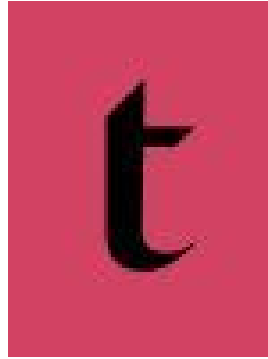
**Bathrooms: 1**

**Parkings: 1**

**Type: Apartment**



Hayden Hedley  
0407109117



Lachlan Hall

**\$515,000**

Bringing a sophisticated new dimension to Kellyville, Montane is a collection of beautifully appointed apartments showcasing superb boutique design, exceptional craftsmanship and the latest in-home automation. Surrounded by greenery, Montane's low-rise four-level buildings encompass 150 one, two and three-bedroom apartments, designed to suit everyone from young professionals and families to first home buyers and investors. Architecturally conceived by award-winning firm Kann Finch, each one has been carefully considered for contemporary living. Crowned by a series of communal rooftop entertaining terraces with thoughtful facilities and impressive lobbies that herald your arrival, Montane reflects the stylish evolution of Kellyville. The kitchens are an ideal marriage of form and function, featuring breakfast bars around which your family and friends can gather. Finishes are of the finest quality, including 40mm stone benchtops, stainless steel European appliances, timber joinery, travertine porcelain tiling and flush flooring between bedrooms, living rooms and external balconies. The overall effect is refined, sleek and thoroughly contemporary. Don't miss the opportunity to secure your spot in this remarkable development at an affordable price. Call 1300 171 541 now to book an appointment and our Sales Specialists will guide you through the process, providing expert advice and tailored solutions to meet your unique requirements. Our display suite is NOW OPEN at 227 Hezlett Road North Kellyville.