

G2/713 Elizabeth Street, Waterloo, NSW 2017

BresicWhitney

Sold Apartment

Friday, 27 October 2023

G2/713 Elizabeth Street, Waterloo, NSW 2017

Bedrooms: 2

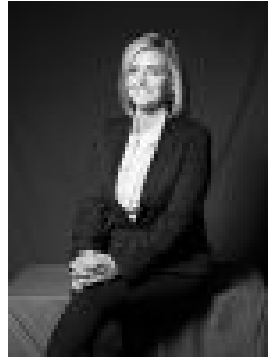
Bathrooms: 2

Parkings: 1

Type: Apartment



Darren Davis
0413677392



Amber Riethmuller
+61411437673

\$1,240,000

Auction Location: On site A unique courtyard residence in a buzzing part of the city, few Inner Sydney apartments would rival this one for house-like design and courtyard connection. In the Neo Central building, it opens to a private rear courtyard as well as a north-facing terrace and level lawn, moments to Waterloo Park, Redfern's eat street, and an easy walk to the CBD. Highlights* Courtyard design of house-like flow* Wrapped in outdoor alfresco spaces* North aspect to terrace & level lawns* Stone kitchen, double Miele fitout, d/w* Gas cooking, ducted air-conditioning* Large bedrooms w/ built-in wardrobes* Integrated laundry, master w/ ensuite* Secure parking, separate storage cage* Walk-everywhere inner-city lifestyle hub* Free Strata Report available at bw.com.au