

g20/35 Camberwell Road, Hawthorn East, Vic 3123

Unit For Sale

Saturday, 18 November 2023

g20/35 Camberwell Road, Hawthorn East, Vic 3123

Bedrooms: 1

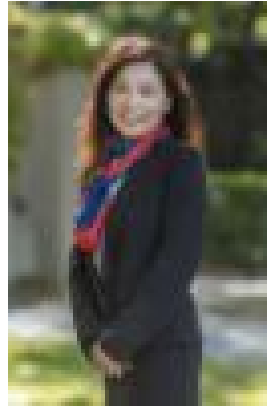
Bathrooms: 1

Parkings: 1

Type: Unit



Toni El-Helou
0398820033



Jessica Wat
0422881301

Contact Agent

Luxurious, light-filled, and with a spacious design that offers phenomenal versatility, this immaculate 1 bedroom + study apartment in 'Hawthorn Park' will captivate every single potential buyer who walks through its doors! Hawthorn Park has a reputation for delivering sleek and stylish residences, and 'G20' is no different. Beautiful timber floors dominate the central living and dining zone which also incorporates a handy study area. If you wanted even larger living, the study could further be an added lounge area. The kitchen dazzles with designer stone and cabinetry along with an integrated fridge/freezer and stainless steel Miele appliances. The bedroom is well-sized and delivers BIR storage, and is only steps from the striking rain shower bathroom. Other features include a superb balcony with excellent space, European laundry, split system heat/cool, European laundry, secure intercom, storage cage, and secure car space. Residents of Hawthorn Park which is designed by Rothelowman will have access to a spectacular sky pool with daybeds and spectacular views of the CBD, communal garden with BBQ and alfresco dining, Wellness Centre with gym, a yoga studio, and massage rooms, and so much more! You're also near Auburn Village, Fritsch Holzer Park, Victoria Road Reserve, Rathmines Road Reserve, Swinburne University, Burwood Rd cafes and restaurants, schools, buses, trams, and Auburn and Camberwell Station.