

# "Guildford" Aggregation, Boomi, NSW 2405



## Sold Other

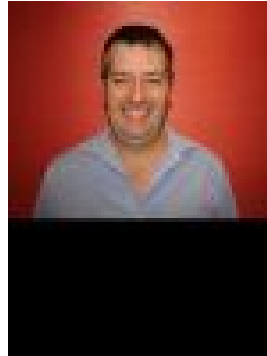
Friday, 19 January 2024

"Guildford" Aggregation, Boomi, NSW 2405

Type: Other



Terrence Adams  
0427525666



Paul Kelly  
0428281428

## Contact agent

AREA:5,560 Hectares (13,739 Acres) 1,825 ha fallow for Winter crop  
LOCATION:The property is situated at Boomi.  
COUNTRY:Alluvial brown or grey clays and black loam soils. Timber consists of Coolibah, river red gum, western grey box, belah, weeping myall and river cooba.  
ARABLE COUNTRY:2,674 Hectares (6,607 acres)780 Hectares to combination of Buffel, Medic, 700 hectares raked. 345 hectares moderate clearing certificate in place to 2034.  
APPROXIMATELY 80% CAN BE FARMED! ON CASTLEVILLA AND GUILDFORDWATER:  
• Boomi and Macintyre river frontage  
• Boomi and Boomi East capped and pipedschemes  
• 45 tanks and troughs  
• Water Licence - 150 megalitre Croppa Creek and Whalan watersource (WAL30686) with attached works approval 90CA827570.  
• Flood Works Approval - 90FW833700 (More details available on request).  
• Mandatory Code Compliant Certificate - For treatment of 345 HECTARES on Boronga LMCO1163 (More details available on request).  
RAINFALL:-525mm pa ( over 300mm since October)  
FENCING:Excellent quality fencing  
IMPROVEMENTS:Guildford- 4 bed homestead- 5 bed cottage with split system air conditioning- 24m x 12m machinery shed- 6m x 12m barn- Cattle yards- 5 x 73T silos- 7.5m x 18m workshop- Split system Air conditioning- Coolroom- Stables  
Castlevilla- 4 bed homestead- Split system airconditioning- Coolroom- Machinery shed, with lockup bay and 8 inch cement floor- Hay shed- Cattle yards- Steel Yards on road for all weather access- Stables- 254 ha of Sorghum Crop Included  
Boronga- 18m x 30m machinery shed- Cattle yards- 570ha of a Sorghum Crop-offered for sale for the first time in over 130 years-Sold as a whole or Individual Assets  
EOI  
DETAILS:Closes 4pm, Thursday, 29th of February 2024(If not sold beforehand)