

1/6 Firewheel Place, Suffolk Park, NSW 2481

House For Sale

Tuesday, 25 June 2024

1/6 Firewheel Place, Suffolk Park, NSW 2481

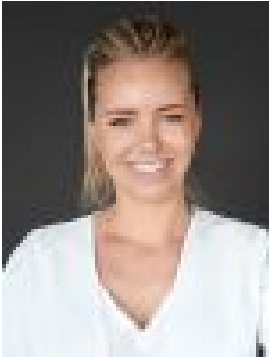
Bedrooms: 3

Bathrooms: 2

Parkings: 2

Area: 354 m2

Type: House



Tara Torkkola
0266858466



Su Reynolds
0266858466

Contact Agent

Nestled within the coveted beachside community of Suffolk Park, this newly renovated standalone residence epitomizes coastal living, boasting top-tier interior design that complements its prime location. Upon stepping inside, you'll find a beautifully curated interior with new fixtures and finishings throughout. The open-plan layout features high vaulted ceilings and a north-facing orientation providing abundant natural light enhancing the sense of space. The subtle rise of the home provides lush greenery visible from every window, while its closeness to the beach offers sounds of the ocean nearby. The kitchen has a modern aesthetic and is as functional as it is stylish, featuring custom cabinetry, integrated appliances, Fibonacci terrazzo benchtops and bathed in natural light from a skylight above. The bedrooms feature plush new carpeting with the main including an ensuite, walk-in wardrobe and direct access outside to the spotted gum hardwood deck with established tropical surrounds. Both bathrooms are adorned with stunning Japanese mosaic floor-to-ceiling tiling and Fibonacci terrazzo benchtops. Embrace year-round comfort with newly installed heating/air conditioning and ceiling fans throughout. The separate laundry, extra office space plus garage with internal access and ample storage makes this exceptional home spacious and functional. The easily maintained landscaped garden provides a serene backdrop for outdoor relaxation and entertaining. The back balcony beckons for alfresco dining or simply unwinding as you soak in the sounds of the ocean and birdlife. This home rests on a private road facing parkland, offering a delightful view of nature from the front balcony and an added sense of privacy and openness whilst only moments from the dog-friendly beach, park, shops and restaurants. Take advantage of the nearby nature path for a leisurely bike ride into Byron Bay or the local schools, including Byron High School and St. Finbarrs. Don't miss your chance to experience beachside living in this tightly held community in Suffolk Park. Arrange your viewing today by calling Tara Torkkola and Su Reynolds and make this coastal sanctuary your own. Council Rates: \$3,634.60 pa