

1 Aspect Drive, Huntly, Vic 3551

House For Sale

Wednesday, 19 June 2024

1 Aspect Drive, Huntly, Vic 3551

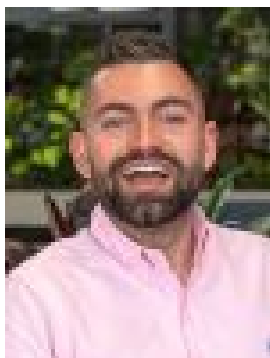
Bedrooms: 4

Bathrooms: 2

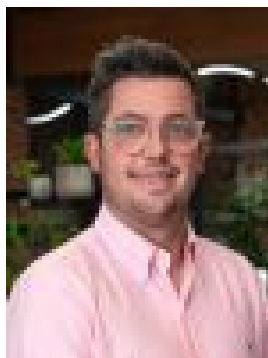
Parkings: 2

Area: 699 m2

Type: House



Sacha Dale
0407899066



Dale Bish
0457492032

\$580,000 - \$630,000

Welcome to 1 Aspect Drive, a beautifully designed 4-bedroom family home by Metricon, perfectly nestled in the vibrant and evergrowing community of Huntly. This exceptional property offers a blend of luxury, comfort, and convenience, making it ideal for modern family living. As you enter the home, you'll be greeted by a spacious master bedroom located off to your right, featuring a grand double door entry, a generous ensuite, and a walk-in robe. The first of multiple living areas is positioned off the entry to your left, providing a private retreat perfect for relaxation. The open-plan kitchen, living, and dining area form the heart of the home, highlighted by a stunning pendant light over the dining area. The gourmet kitchen is a chef's dream, boasting a 900mm cooktop, stone benchtops, and a great-sized walk-in pantry with access to garage for added convenience. Bedrooms 2, 3, and 4 are thoughtfully designed with built-in robes that include mirrors, offering ample storage and an airy feel. The home's functional layout continues with a well-sized laundry equipped with ample storage, including a built-in cupboard. One of the standout features of this home is the huge undercover alfresco area, complete with a ceiling fan, perfect for year-round entertaining. This outdoor space is complemented by established landscaping including buffalo lawns, creating a serene and private environment. Comfort is guaranteed with ducted heating and evaporative cooling throughout the home. The property also includes modern conveniences such as a smart front door lock and a double lock-up garage with an epoxy resin painted, anti-slip floor, ensuring both security and practicality. Additionally, the shelving in the garage can be included in the sale, providing even more storage options for the new owners. Situated on a generous 699sqm block, this home offers plenty of space for the whole family. The prime location in Huntly means you're just a 2-minute drive from George's Bakery, a café, and the local IGA, and under 20 minutes to Bendigo CBD. 1 Aspect Drive is more than just a house; it's a place where thoughtful design meets everyday practicality. With its luxurious features and prime location, this home is perfect for families seeking both style and convenience in Huntly. Contact us today to arrange a viewing and experience this stunning home for yourself!