

# 1 Balfour Street (Tallawong), Schofields, NSW 2762



## House For Sale

Friday, 5 July 2024

1 Balfour Street (Tallawong), Schofields, NSW 2762

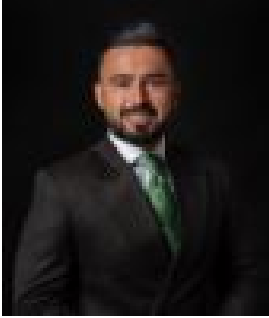
Bedrooms: 4

Bathrooms: 2

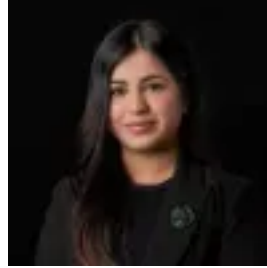
Parkings: 2

Area: 395 m2

Type: House



Amit Kumar  
0288964336



Siya Sachdeva  
0288964336

## Price Guide \$1,180,000

Nestled within one of Tallawong's most sought-after neighbourhoods, this exceptional property epitomises the essence of modern living, offering unparalleled comfort and convenience for families of all sizes. Strategically designed to maximize every square inch, this home seamlessly blends spaciousness with practicality, creating an idyllic sanctuary for families to thrive. It boasts a land size of 396 sqm approx. and is located within close proximity to Schofields Public School, local amenities, and Schofields Train Station, this residence is perfectly positioned for effortless living. This expansive family home boasts a well-thought-out floor plan featuring separate living zones on both the ground and upper levels, bringing together the perfect blend of comfort and convenience. As you step inside, you are greeted by the formal living room, bathed in natural light streaming through large windows, providing a perfect space for relaxation or entertaining. The journey continues as you move into the combined kitchen, dining, and living areas of the home, culminating in the undercover alfresco and spacious backyard, ideal for outdoor gatherings and family activities. The kitchen has been meticulously designed, featuring high-end quality stainless steel appliances, stone benchtops, a freestanding five-burner gas cooktop, and oven. It also includes an inviting eat-in breakfast bar, tiled splashbacks, a walk-in pantry, and ample storage space, ensuring a perfect blend of functionality and style for all your culinary adventures. Accommodation comprises four great-sized bedrooms, three of which feature built-in robes. The master bedroom is a true retreat, showcasing a spacious walk-in wardrobe and a private ensuite bathroom with a double basin sink. The main bathroom also includes a freestanding bathtub, offering a spa-like experience within the comfort of your own home. Features you will love:- Land size 396 sqm approx. - Ideal North-East facing aspect- Ducted air conditioning- Floorboards throughout the common area- Formal living room as you enter the home- Rumpus room upstairs - Powder room downstairs- Undercover alfresco and spacious backyard - Double lock up garage with internal access Location Highlights:- 5-minute drive to Schofields Train Station and Schofields Shopping Village- 5-minute drive to Tallawong Train Station - Short stroll to the childcare centre- 9-minute drive to Rouse Hill Town Centre- Close to Schools, local parks, bus stops and more Disclaimer: All information contained herein is obtained from property owners or third-party sources which we believe are reliable. We have no reason to doubt its accuracy, however, we cannot guarantee it. All interested person/s should rely on their enquiries.