

1 Beth Way, Glenwood, NSW 2768



House For Rent

Monday, 20 May 2024

1 Beth Way, Glenwood, NSW 2768

Bedrooms: 4

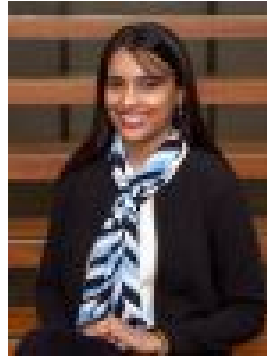
Bathrooms: 2

Parkings: 2

Type: House



Helen Passano
0288835418



Mona Sen
0288835418

\$820 pw

Located in one of the most sought-after locations in Glenwood within easy access to all amenities. Amazing street presence, offering a functional floor plan with plenty of light flowing indoor and outdoor areas. Featuring generous sized bedrooms with built-ins, main bedroom with en-suite, walk-in robe, and access to large balcony. Open plan eat-in kitchen adjoining large dining and family areas. features:~ Ducted Air Conditioning~ Large pergola for bbq/ entertainment~ Separate living and family areas~ Multiple dining areas~ Rumpus/media room~ Good sized backyard for kids to play.~ Kitchen with Caesarstone bench-top, gas cooking and plenty of storage~ Separate study room downstairs~ Double garage with internal access~ Separate laundry ~ Powder room downstairs~ Walking distance to Parklea Public school
Location highlights: Perfectly located within easy access to local quality schools, Glenwood Village Shopping Centre, Sikh Temple, public transport including T-Way bus stops. Other convenient nearby amenities such as medical centres, Sporting facilities, Northwest Rail link, Norwest Private Hospital, Norwest Business Park and M2 & M7.