

**1 GISBORNE STREET, Wellington, NSW 2820**



**House For Rent**

Wednesday, 3 July 2024

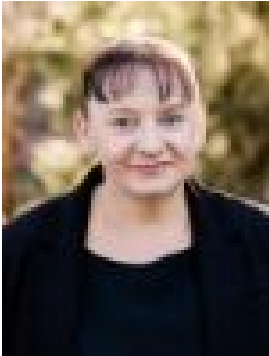
**1 GISBORNE STREET, Wellington, NSW 2820**

**Bedrooms: 4**

**Bathrooms: 1**

**Parkings: 2**

**Type: House**



Tina Kitch

**\$460 per week**

Features four large bedrooms, large living area. Separate dining area and a grand kitchen. High ceiling throughout the property, giving natural light glow. Large verandahs wrap around the property, and a very spacious back yard with entertaining areas. Two storage sheds in the back yard, carport along the side to the house for cars. Please contact our office for an appointment on 02 6845 1555.