

1 Jacaranda Drive, Salisbury East, SA 5109



House For Sale

Thursday, 4 July 2024

1 Jacaranda Drive, Salisbury East, SA 5109

Bedrooms: 4

Bathrooms: 1

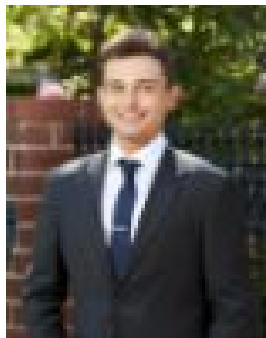
Parkings: 6

Area: 596 m2

Type: House



Justin Irving
0884828204



Jake Flavel
0415514292

Auction Sat 20th July

Ray White Salisbury is proud to present 1 Jacaranda Drive, Salisbury East. THE LOCATION: Located in a peaceful, family-friendly street, this home is close to well-known schools such as Kings Baptist Grammar School, St Augustine's Parish School, Salisbury Primary and High, and Tyndale Christian School. The UniSA campus at Mawson Lakes is just an 8-minute drive away. Shopping precincts, including the brand new District Outlet Centre, Golden Grove Village, Tea Tree Plaza, and Parabanks Salisbury, are all a short drive away. The Lyell McEwin, Central Districts Private Hospital, and Modbury Hospital are all accessible from the home, as well as many other medical facilities and health centers. The residence is only a short commute to local public transport such as Parafield or Salisbury Railway Station, and travel to the Adelaide CBD is less than 20kms. THE RESIDENCE: Welcome to this spacious family home situated on an expansive corner allotment with two wide street frontages (30m and 18m approx.) and two carports for ease of off-street parking. The neatly maintained front yard and freshly painted facade add to the street appeal. The floorplan offers four generously sized bedrooms, all with built-in robes, an expansive living and dining space, and a well-equipped kitchen. The central bathroom has a convenient separate toilet, and the laundry positioned off the kitchen provides access to the rear yard. Outdoors, a verandah is situated for outdoor entertaining, and a clothesline plus garden shed adds practicality to the space. Neat and tidy landscaping and garden beds complete the outdoor area. FEATURES: • Built in 1964 • Two carports • Corner Allotment • Two Separate Carports • Neat and Tidy Landscaping • Expansive Living and Dining Space • Outdoor Verandah for Entertaining • Four Generously Sized Bedrooms with Built in Robes • 30 metre and 18 metre Dual Street Frontages (approx) Remarkable opportunity to own in Salisbury East & definitely not to be overlooked, all enquiries welcome. Regarding price. The property is being offered to the market by way of Auction. We will supply recent sales data for the area which is available upon request via email or at the open inspection. Disclaimer: Every care has been taken to verify the correctness of all details used in this advertisement. However, no warranty or representation is given or made as to the correctness of information supplied and neither the owners nor their agent can accept responsibility for errors or omissions. Prospective purchasers are advised to carry out their own investigation.