

1 Viewbank Rise, Beaconsfield, Vic 3807



Sold House

Wednesday, 10 April 2024

1 Viewbank Rise, Beaconsfield, Vic 3807

Bedrooms: 3

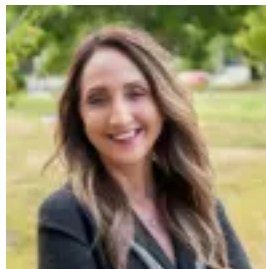
Bathrooms: 2

Parkings: 2

Type: House



Debbie Brettner
0390887488



Julie Petty
0390887488

\$955,000

Welcome to your dream family home in the heart of Beaconsfield. This charming red brick residence offers multiple living areas and the perfect blend of comfort, style, and relaxed entertainment. Enjoy the leafy street views from the large formal lounge and adjacent formal dining area. A large master suite also awaits, featuring a newly renovated ensuite with modern charcoal floor-to-ceiling tiling, an oversized shower, beautiful skylight and a sleek monochrome vanity. The well-appointed kitchen features a large island bench, wall-mount oven, ample storage, and a striking crimson glass splashback. Cosy up by the Coonara wood fire heater in the family living area overlooked by the culinary zone or gather for meals in the second dining space overlooking the gorgeous undercover alfresco. The spacious rear rumpus boasts abundant natural light and looks out to the sunny, north facing rear yard. The home's additional bedrooms, each with in-built storage, are serviced by a second beautifully renovated main bathroom, complete with a freestanding tub and separate toilet. The dual access laundry adds to the convenience of modern living. Step out to your own private oasis and be greeted by an expansive undercover alfresco area, complete with a woodfire pizza oven, gas BBQ, and the serene ambiance of the bamboo-enclosed zone. The backyard continues to impress with water features, a Balinese-inspired corner retreat, and a spacious grass zone surrounded by lush established gardens-perfect for entertaining guests or unwinding with loved ones. Convenience is key with an oversized double car garage offering rear roller access to the large courtyard and year-round comfort is afforded with ducted heating and evaporative cooling. Located in a sought after neighbourhood you'll have easy access to nearby shops, parks, Holm Park Reserve, Beaconsfield Primary School, Haileybury, Beaconsfield Train Station, Akoonah Park Market, and more. Don't miss this opportunity to make this meticulously maintained property your forever home. Photo I.D required at all inspections.