

**10 Belson Street, Malvern East, Vic 3145**



**House For Sale**

Wednesday, 10 July 2024

10 Belson Street, Malvern East, Vic 3145

**Bedrooms: 4**

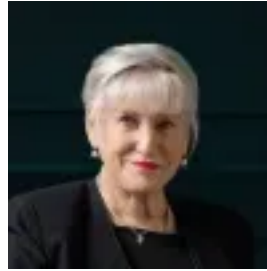
**Bathrooms: 2**

**Parkings: 2**

**Type: House**



Hugh Tomlinson  
0409427483



Rae Tomlinson  
0418336234

**\$3,500,000 - \$3,750,000**

The irresistible family appeal of this glorious single level c1920's residence's evocative blend of period elegance and contemporary style is more than matched by the beautiful, landscaped garden surrounds and the prestigious Gascoigne Estate address. Showcasing ornate ceilings, leadlight windows and timber floors, the generous entrance hall flows through to an elegant sitting room with bay window and fireplace and a gracious formal dining room also with an open fire. Two bay windows allow natural light to radiate through the expansive open plan living and dining room served capably by a lavish gourmet kitchen appointed with stone benches, a 90cm Ilve oven and integrated fridge/freezer. French doors open the living to a large pergola covered deck and the gorgeous private northeast facing landscaped garden. The stunning main bedroom with built/walk in robes and an ensuite complements three additional double bedrooms and a stylish bathroom with bath. Nestled within a picturesque tree-lined street close to Central Park, Wattle Rd trams, Central Park Village's restaurants and shops and excellent private and public schools, it includes an alarm/CCTV, hydronic heating, RC/air-conditioning, Euro-laundry, pull-down attic storage, garden storage, secure OSP and remote gate.