

10 Braford Drive, Doreen, Vic 3754

CHWYLA

House For Sale

Saturday, 29 June 2024

10 Braford Drive, Doreen, Vic 3754

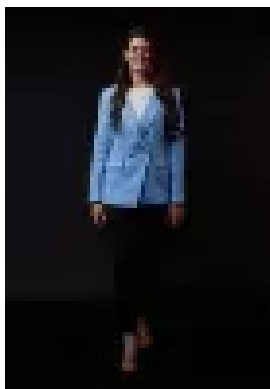
Bedrooms: 4

Bathrooms: 2

Parkings: 2

Area: 920 m2

Type: House



Stacy Richards

0386009995

\$1,090,000 - \$1,190,000

Make more of : 920m2 block 2 Street presence 2 Grand entrance with decking, high ceilings, outdoor lighting 2 Four oversized bedrooms 2 Two bathrooms with stone benchtops 2 Three living areas 2 Double garage with epoxy flooring, significant storage 2 Double gated side access into backyard parking 2 High ceilings 2 Three step cornices 2 Feature lighting 2 Downlights 2 Brand new carpet 2 Engineered flooring 2 40mm stone benchtop with double waterfalls 2 900mm cooktop 2 600mm oven 2 Dishwasher 2 Plumbed fridge space 2 Walk-in pantry 2 Ducted vacuum 2 Laundry with stone benchtops, significant built-in cabinetry 2 Master with fitted out walk-in robe 2 Three bedrooms with built-in robes 2 Just renovated ensuite with stone benchtops, rainwater showerhead, walk-in linen storage 2 Oversized shower 2 Additional double door linen 2 Refrigerated cooling and heating 2 Tinted windows to front of home 2 Oversized covered alfresco with outdoor kitchen, stone benchtops, electric blinds, heat strips, dual fans 2 Built-in seating 2 Fire pit area 2 Immaculate landscaping 2 Manicured lawns 2 Sprinkler system 2 Garden lighting 2 Room for a pool 2 20 solar panels 2 Security system 2 Quiet street 2 200m to Braford Drive playground 2 400m to Overland Park and Playground 2 1.2km to Laurimar shops 2

The initial appeal – As far as first impressions go, this home has serious street appeal, and a statement grand entrance via extra-wide decking, ultra-high ceilings, and double doors. Inside, you'll love your brand new, magazine style ensuite, fresh carpet, and three living zones. The main attraction – Love hosting? The oversized entertaining area is next level, with an outdoor kitchen, stone benchtops, built-in barbie and wok, double ceiling fans, heat strips, electric blinds and built-in seating. You'll also have a private alfresco off your master bedroom. Love holidaying? You'll have double gated side access into significant backyard parking for your van, boat, camper, etc. Your journey here starts this Saturday.