

# 10 Mornington Court, Shell Cove, NSW 2529

## House For Sale

Wednesday, 20 March 2024



10 Mornington Court, Shell Cove, NSW 2529

Bedrooms: 4

Bathrooms: 2

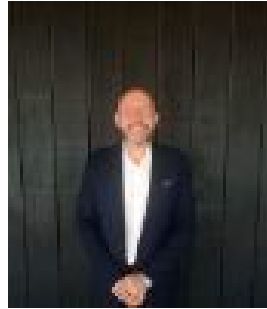
Parkings: 5

Area: 979 m2

Type: House



Mark De Cresci  
0422744097



Nathan Campbell  
0242965500

## **Auction If Not Sold Prior**

Welcome to 10 Mornington Court, Shell Cove. Set on a once in a lifetime 979sqm block in an exclusive enclave, this property has been carefully curated into a single level home offering peace, privacy, style and space for all. White and bright with contrasting warm timber tones, the welcoming façade gives a hint to the space on offer inside. An inspired floorplan with high ceilings throughout is separated into distinct zones. A generous study/loungeroom combination forms the hub of bedrooms two, three and four. All bedrooms boast a unique outlook, built-in wardrobes, plantation shutters with sheer curtaining, and space to accommodate king size bedding. Continue down the hall and note the master suite to your right. The must-have walk-in wardrobe and luxurious ensuite are of the scale and finish you'd expect in a high-end home. Step down into the large master with east-facing garden views and you'll feel a sense of serenity and peace. On to the entertainers' heart of the home, the centrally positioned kitchen with 900mm SMEG upright stove and rangehood, walk-in pantry and the large wrap-around breakfast bar has a commanding view over the large living/dining space and yard beyond. Naturally, a dedicated theatre room provides space for game night or that special movie. Outside, you can't help but be drawn to the sparkling in-ground pool and spa, with a dedicated pool cabana accentuating the unique holiday vibe. A true poolside paradise complete with a covered alfresco making the perfect outdoor entertainment space, replete with shade blinds. To the north, a vegetable and herb garden takes advantage of more yard space, something that you just don't get on a standard size block. If you've read this far you know you're dealing with a special home, but now let's talk garaging. A triple auto garage under the main roofline is complemented by a detached double garage, concreted apron and large shed. With plenty of extra yard space still remaining, the ideas are only limited by your imagination. Topped off with a solar power system and brand new ducted air conditioning throughout, 10 Mornington Court, Shell Cove is an irreplaceable opportunity to secure resort-style living with space to spare in one of the most dynamic suburbs in the Illawarra!