

**10 Norwin Place, Stanhope Gardens, NSW 2768**



**House For Sale**

Thursday, 4 July 2024

10 Norwin Place, Stanhope Gardens, NSW 2768

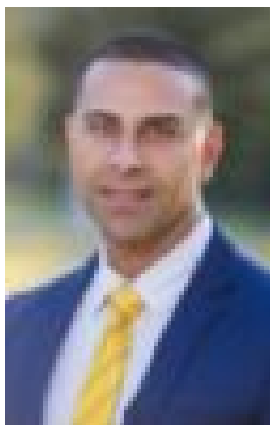
**Bedrooms: 4**

**Bathrooms: 2**

**Parkings: 2**

**Area: 490 m2**

**Type: House**



Harry Chhina

0422229433

**Auction - must be sold!**

Sukhbir & Harry from Ray White Kellyville Ridge Proudly Present : Completely transformed for contemporary family living, this entertainer offers expansive comfort throughout light-filled interiors, Situated within a short distance to schools, shops and parks, this home will delight buyers. This immaculate home features:~ Four Spacious bedrooms~ Two immaculate bathrooms and a powder room~ Open plan dining and living area~ Spacious kitchen with quality appliances~ Rumpus upstairs~ Well designed backyard~ Multi zoned ducted reverse cycle air conditioning~ Double auto garage

Location Highlights:~ School catchment of Kellyville Ridge Public & Glenwood High School~ 4 Minutes(approx.) to Stanhope Shopping Village~ Less than 5 Minutes(approx.) to Rouse Hill Town Centre~ Less than 2 Minutes(approx.) to Kellyville Metro

We highly recommend you visit this Family Home. For more information, please contact us at Ray White Kellyville Ridge.

Disclaimer: All information contained herein is gathered from sources we believe to be reliable. However, we cannot guarantee its accuracy. We do not accept any responsibility for its accuracy and do no more than pass it on. Any interested persons should rely on their own inquiries.