

10 Princess Place, Tallai, Qld 4213

House For Rent

Monday, 8 July 2024

10 Princess Place, Tallai, Qld 4213

Bedrooms: 5

Bathrooms: 3

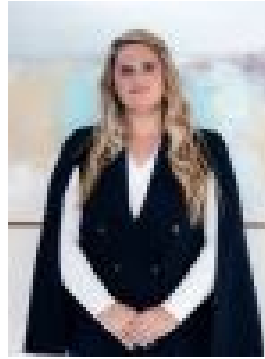
Parkings: 4

Area: 5151 m2

Type: House



Zoe Ray
0755175282



Michelle Osmond

\$1,400 per week

This beautiful family home is located in the picturesque Tallai acreage area. Located on Princess Place this home has so much to offer and is ideally suited to family living. In total a massive 456m² of living is on offer which includes five bedrooms, however one would suit a dual living family arrangement or alternatively independent living for an adult child. A beautiful sparkling blue, fully tiled swimming pool will offer the perfect relaxation retreat for the family during the warmer months. Adjacent to this sits a large undercover alfresco area which offers plenty of room for outdoor dining as well as casual seating overlooking the pool area. Along the front of the property runs a large veranda and the rear of the property features a covered patio area also. The central kitchen is the knockout feature of this beautiful property. Nestled between the dining and living areas the kitchen delivers the wow factor. Featuring 40mm stone benchtops and a stunning turquoise blue splash back, island bench with breakfast bar, large walk-in pantry and plenty of storage this kitchen will accommodate the fussiest of cooks. A 600mm ceramic cooktop and dual wall mount ovens with microwave space above complete the offering. All bedrooms in this lovely home are generous in size and all feature built-in robes and window treatments. The large internal laundry includes ample built-in storage and offers direct external access to the rear patio and clothesline. For the student in the family a study nook sits close by to the kitchen. This is a real gem of a home, bespoke in its styling, secluded in its location, yet right on the doorstep of all the amenities available in the surrounding area. Pool maintenance and lawn mowing is included in the weekly rental. Features include:-
- 456m² of beautiful acreage living set on a 5151m² lot
- 5 bedrooms including one suitable for dual living occupancy
- Inground fully tiled swimming pool with adjacent undercover alfresco with crazy paving finish
- Double carport accommodation plus the ability to park additional vehicles at the property
- Veranda along the front of the property and covered patio to the rear
- All bedrooms feature built-in robes and window furnishings
- Beautiful central galley style kitchen with 40mm stone bench tops, island bench with breakfast bar, walk-in pantry, 600mm ceramic cooktop and dual wall mount ovens and plumbed fridge space
- Spacious master bedroom with built-in robes and adjoining ensuite featuring a walk-in shower
- 4 separate living areas including lounge, dining, living and family rooms plus a study nook
- 3 split air conditioning units plus ceiling fans in multiple locations
- Double roller blinds in most locations
- 6.6kw solar panels
- Solar hot water
- 2 garden sheds
- Large laundry with direct external access and cupboard storage
- Established gardens
- Pool and lawn maintenance included in weekly rental
Conveniently located:-
- 2.1 km to Mudgeeraba State School Catchment (Primary within catchment)
- 5.1 km to Robina State High School (Secondary within catchment)
- 4.8 km to All Saints Anglican School (Pre-Prep - 12)
- 5.8 km to Somerset College (Pre-Prep - 12)
- 3.6 km to Mudgeeraba Market Shopping Centre
- 5.2 km to Robina Town Centre
- 2.8 km to M1 North on ramp
- 3.1 km to M1 South on ramp
- 4.4 km to Robina Train Station
- 9.4 km to Bunnings Nerang
Contact Michelle Osmond or Zoe Ray, your trusted Tallai leasing specialist at JMO Property Group today on (07) 5517 5282 to register your interest.