

10 The Promontory Drive, Shell Cove, NSW 2529



House For Sale

Sunday, 23 June 2024

10 The Promontory Drive, Shell Cove, NSW 2529

Bedrooms: 5

Bathrooms: 3

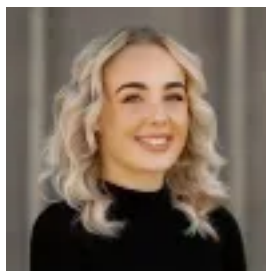
Parkings: 2

Area: 274 m2

Type: House



Amanda Bonnici
0457088911



Inde Bonnici
0436342146

Price Guide - \$1,750,000

Experience the coastal charm of 10 The Promontory Drive, Shell Cove. This contemporary residence is steps away from the world class marina precinct and exudes coastal glamour. Boasting an open plan lifestyle with five bedrooms and three bathrooms, this is the ultimate display of luxury living. All five bedrooms have been built with attention to detail including four with BIWs and the expansive master retreat has been appointed with a stylish ensuite and balcony to admire the water views. The lower level features the perfect guest retreat with a full bathroom and an external door that open up to the fully landscaped garden. Entertain in style with a generous sized tiled outdoor alfresco, separate living area upstairs and complete with a low maintenance yard and plunge pool. With a double car garage, plenty of storage throughout and complete with ducted air conditioning, 900mm freestanding stainless steel oven, floor to ceiling tiled bathrooms, fly screens and blinds, this home is ready to move into. Embrace an exclusive coastal lifestyle surrounded by picturesque beaches, parklands and shopping centres just minutes from your front door and only 1.5hrs from Sydney CBD. Don't miss the opportunity to make this beautiful property your new home. Contact Amanda Bonnici on 0457 088 911.