

10 Valleyfield Court, Wattle Grove, NSW 2173

House For Sale

Wednesday, 19 June 2024

10 Valleyfield Court, Wattle Grove, NSW 2173

Bedrooms: 3

Bathrooms: 2

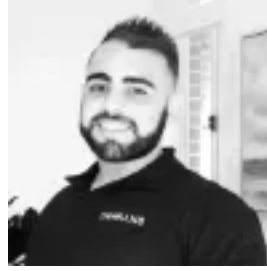
Parkings: 1

Area: 345 m2

Type: House



Shabna Maggs
0434678114



Michael Demian
0404601084

Private Negotiation

Set in Wattle Grove's most premier streets, this charming home is superbly appointed with a focus on effortless comfort and low maintenance living. The picturesque façade reveals a delightful home with fresh updated interiors adding a modern touch throughout. There are three spacious bedrooms with the master bedroom featuring lovely bay windows with plantation shutters, an ensuite and split-system air conditioning. Contemporary finishes shine in the generous living and dining area, which showcases high ceilings giving an open and spacious feel. Air conditioning provides ease and year-round comfort. The living area also has access to an additional undercover courtyard, inviting extra light into the interiors and providing space for greenery to thrive. The kitchen has everything you need for functionality and ease, including gas cooking, generous bench space and breakfast bar. Sliding doors open out to the covered pergola and neatly paved outdoor area, providing a tidy and level space ideal for entertaining and for children and pets to play. The neat main bathroom with separate toilet, laundry with ample storage and single garage with internal access round out the features of the home. Nestled on a paved street walking distance to Wattle Grove Lake, the home offers idyllic family living close to quality schools, Wattle Grove Shopping Village and Holsworthy train station.