

100 Ridgevale Boulevard, Holmview, Qld 4207

House For Sale

Tuesday, 25 June 2024



100 Ridgevale Boulevard, Holmview, Qld 4207

Bedrooms: 4

Bathrooms: 2

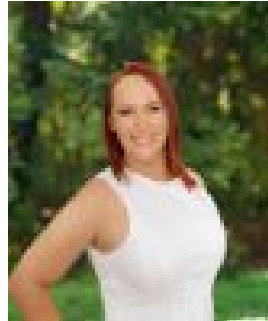
Parkings: 2

Area: 448 m2

Type: House



Eiles Brittany Hunt
0739103776



Niki Blenkins
0421229033

High \$700,000's

Step into an oasis of elegance at 100 Ridgevale Boulevard, Holmview. This stunning ex-display was designed to impress and offers an unmatched lifestyle of comfort and sophistication. From the moment you enter through the grand portico and oversized pivot door, you'll be captivated by the spaciousness and impeccable design of this beautiful freshly painted residence. Nestled in the serene and sought-after suburb of Holmview, this property combines contemporary living with an enviable location. With upgraded features throughout, including a premium chef's kitchen and an integrated alfresco area, this home is perfect for those who love to entertain and enjoy the finer things in life. Showcasing premium finishes throughout, the family-friendly layout boasts four generous bedrooms and multiple living spaces, ensuring everyone has room to relax and unwind. Set a low maintenance 448m² block, this home is ideal for discerning buyers who want a turn-key ready home that doesn't compromise on quality and lifestyle.

INSIDE:- 4 bedrooms including a luxe Master Suite which features a stunning ensuite, including twin vanity and oversized shower.- Three additional bedrooms are spacious and equipped with built-in robes.- Impressive open plan kitchen featuring 900mm stainless steel appliances, stone benchtops, and a walk-in pantry.- Open-plan family/dining with seamless flow to the large integrated alfresco.- Separate media room- 2740mm (9ft) ceilings throughout, enhancing the sense of space and luxury.- Ducted air conditioning with independently controlled zones managed by MyAir.- LED downlights, external lighting package, and internal ceiling fans throughout.- Double lock-up garage with air conditioning and internal entry for convenience and security.

OUTSIDE:- Grand portico and 1,200mm pivot entry door, creating a striking first impression.- Contemporary facade offering modern curb appeal.- Large patio perfect for entertaining, overlooking an easy-care backyard.- Fencing around the alfresco, making it safe and secure for the family and pets- Solar panels- Rear shed for secure storage

Experience the allure of Holmview, where convenience meets tranquillity. Families are drawn to this area for its abundant parks, and proximity to schools, shopping and dining options. The peaceful environment, combined with easy access to major transport routes, makes Holmview a prime location for modern living. Enjoy the best of both worlds - a peaceful suburban setting with easy access to urban conveniences.- 5 min drive to Holmview Central Shopping Centre- 7 min drive Edens Landing State School- 7 min drive to Bunnings Bethania- 8 min drive to Waterford Plaza- 10 min drive to Windaroo Valley State High School- 15 min drive to Canterbury College- 15 min drive to Logan Hospital- 20 min drive to Logan Hyperdome- 35 min drive to Brisbane CBD- 45 min drive to the Gold Coast

This gorgeous home is vacant and ready for you to move in. Contact the Hunt Property Team today and elevate your lifestyle."

RE/MAX Revolution Real Estate has taken all reasonable steps to ensure that the information contained in this advertisement is true and correct but accepts no responsibility and disclaims all liability in respect to any errors, omissions, inaccuracies or misstatements contained. Prospective purchasers should make their own enquiries to verify the information contained in this advertisement