

102 Oleander Drive, Ashgrove, Qld 4060

House For Rent

Friday, 1 December 2023

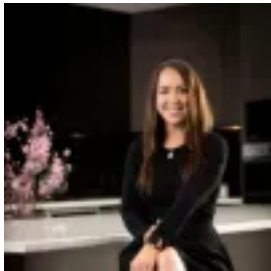
102 Oleander Drive, Ashgrove, Qld 4060

Bedrooms: 6

Bathrooms: 3

Parkings: 4

Type: House



Bridgitte Nelson

0730733991

\$1,500 per week

Welcome to 102 Oleander Drive in Ashgrove! This character home has undergone a complete transformation from its modest beginnings in the early 1900s to show something genuinely unique. Nestled in Ashgrove, this stunning residence radiates the distinctive charm of the area while adding a modern touch to its old-world character. The front entrance boasts low-maintenance manicured gardens, creating a captivating street presence with breathtaking views and an elevation that captures refreshing breezes. Upon entering, the central corridor directs your attention to the main living area, featuring a flexible floor plan that easily accommodates modern life. The open concept is highlighted by high ceilings, and the warm touch of golden polished spotted gum floors adds to the inviting ambiance. The well-designed kitchen is a highlight, equipped with sleek cabinetry, luxurious marble and Caesarstone finishes, a Zip hot/cold tap, and high-end Gaggenau appliances such as an induction cooktop, steam oven, electric oven, and plate warmer. Additional amenities include an integrated Miele dishwasher and a Liebherr fridge and freezer. Hosting big or small gatherings is a snap thanks to the central island bench and walk-in pantry, which will meet all of your storage needs. A timber terrace that is accessible from the open-concept living and dining space allows for hassle-free and unhurried entertaining all year long. A built-in barbecue, teppanyaki grill, outdoor dishwasher, range hood, two Liebherr refrigerators, a television, and sound system are all included in the outdoor kitchen. The thoughtful floor plan extends to a second living room downstairs, providing an extra space for family enjoyment and fostering family harmony. This space extends to a second outside gathering spot. Among the six double bedrooms, the master bedroom stands out with spacious accommodations, a luxurious ensuite, a walk-in closet, and a private study. The sleeping quarters are divided into two upstairs and four downstairs. Additionally, the lower floor has a separate entrance, making it perfect for maturing teenagers or a larger family. Features of 102 Oleander Drive include: • Formal lounge + media room • Multiple outdoor living spaces • 3 luxurious bathrooms + powder room • Gas fireplace in the living area • Study nook + separate study • Perfect north/south orientation • Zoned air-conditioning throughout • Wired speaker system throughout • Tinted windows & alarm system • Easy care landscaped surrounds • Undercover accommodation for two vehicles. Marist and Mt St Michaels College may both be reached on foot from this superb position, which is adjacent to several prestigious, highly rated schools. Parkland, walking and biking trails, a direct bus line to the CBD, and the Ashgrove Central commercial district are all close by. Whilst every care is taken in the preparation of the information contained in this marketing, Housemark will not be held liable for any errors in typing or information including alterations made to the property, and any inclusions that may not be represented in this advertisement. All interested parties should rely upon their own enquiries in order to determine whether or not the property and utilities (including available internet options) are suitable for their needs. Interested? What do you do now? To book your inspection simply click on 'Email Agent' or the 'Book inspection' Button. By registering, you will be instantly informed of inspections, updates and changes to your appointment. If you have any questions please click 'Email Agent', ask your question and we will get back to you as soon as possible. INTERESTED IN APPLYING? Copy the below link into your browser to visit our applications portal. Find the property you would like to apply for, and send through your application! We can process applications prior to your inspection, so no need to wait until after viewing! <https://www.2apply.com.au/agency/Housemark> When logging in to submit your application, put your email address in and you will be EMAILED a pin. This will be emailed to you every time you log into 2Apply – it is a security step to ensure your account and personal information cannot be accessed by anyone else.