

**10A Crommelin Crescent, St Helens Park, NSW, 2560** **RayWhite**

## House For Sale

Monday, 5 August 2024

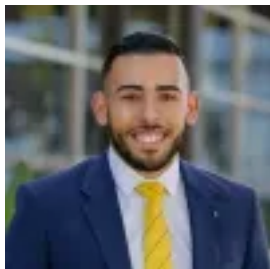
10A Crommelin Crescent, St Helens Park, NSW, 2560

**Bedrooms: 3**

**Bathrooms: 1**

**Parkings: 1**

**Type: House**



Mohamed Lababidi

0478650681

## Charming Single-Story Residence!

Discover the charm of 10a Crommelin Street, St Helens Park, a beautifully renovated single-story home that perfectly blends modern comforts with timeless appeal. Situated on a 397sqm block, this inviting residence features three spacious bedrooms, a contemporary bathroom, and a single-car garage. The open-plan living and dining areas flow seamlessly, offering a perfect setting for family gatherings or entertaining guests. With sleek finishes and high-quality fixtures throughout, this home promises a lifestyle of convenience and style in a peaceful suburban setting.

### Key Features Include:

- Ample Kitchen Storage and Bench Space
- Split System Airconditioning
- Shutters Throughout
- Modern Appliances
- Ceiling Fans Throughout
- Built in Robes
- Fully Renovated Bathroom
- Outdoor Patio
- Solar
- EV Charging

### Location Via Google Maps:

St Helens Park Public School - 300m

St Helens Park Reserve - 1.6km

St Helens Park Community Hall - 400m