

11 Balikpapan Court, Johnston, NT 0832



House For Sale

Friday, 5 July 2024

11 Balikpapan Court, Johnston, NT 0832

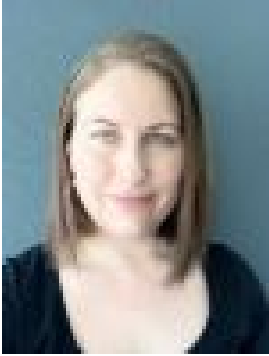
Bedrooms: 4

Bathrooms: 2

Parkings: 2

Area: 763 m2

Type: House



Nuriye Piening
0429826650

\$699,000

Located in a quiet cul de sac this property is currently rented till 17 December 2024 with a long term tenant in place who would like to continue their lease. Currently paying \$755.00 per week. Idyllic family residence offering the perfect fusion of comfort and convenience. Four-bedroom, two-bathroom home, set in a tranquil court location, is a stone's throw from local schools, shops, and healthcare amenities, ensuring all your essential needs are well within reach. As you step inside, the cool, tiled floors that stretch throughout the house greet you, providing an elegant and low-maintenance foundation for family living. The expansive open plan design promises a harmonious flow, while air conditioning and ceiling fans offer a cool retreat from the Northern Territory heat. Sustainability is key with the inclusion of solar hot water and solar panels, easing your energy bills and environmental footprint alike. The four generously proportioned bedrooms ensure personal space for all, whilst the heart of the home is undeniably the large living area, leading out to a substantial rear verandah - perfect for alfresco dining or simply enjoying the outdoors. Out back, the fenced inground pool is a private oasis for the family to enjoy, and the large shed satisfies all your working, hobby, or storage desires. Set on 763m² of land with the added benefit of covered parking for two vehicles, this house is not just a dwelling but a home ready to create lasting memories for a growing family. Features:- Four large bedrooms- Main bedroom with ensuite- Tiled flooring throughout- Solar hot water- Solar panels to reduce energy consumption - Low maintenance garden- Sizeable 763m² block- Large fenced inground pool- Large shed Close By:- 2 mins from Mackillop Catholic College- 6 mins from Palmerston CBD- 6 mins from Bakewell Primary School- 8 mins from Gateway Shopping Centre- 8 mins from Palmerston Regional Hospital