

11 Danbulla Street, South Ripley, QLD, 4306



House For Sale

Tuesday, 3 September 2024

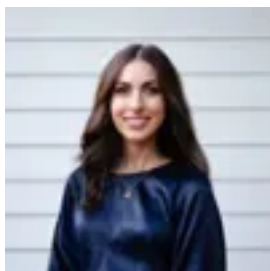
11 Danbulla Street, South Ripley, QLD, 4306

Bedrooms: 4

Bathrooms: 2

Parkings: 2

Type: House



Vanya T

Entertainer's Dream in the Heart of Providence

Property Details at a Glance:

- 239m² Home on a 424m² Block
- Built in 2018 by Ausbuild
- Providence Estate
- Currently Owner Occupied
- Council Rates: \$643/quarter

Centrally located in Providence and only a stone's throw from all the new infrastructure, everything you'll need is at your doorstep! Forget the stress of building and enjoy your new high-end home with a long list of upgrades and show-stopping outdoor entertaining setup.

Spacious and open plan living is guaranteed in your new light and breezy living, kitchen and dining areas which flow seamlessly from the indoors to the outdoors. For the chef of the home, the generous modern kitchen is an absolute dream, boasting a 5 burner gas cooktop, oven, large walk-in pantry, feature pendants and more storage than you'll know what to do with.

With multiple internal living areas and a show-stopping pool, there is plenty of space for the whole family to spread out and enjoy the beauty of their surrounds!

Downstairs:

- Light and spacious kitchen, living, and dining areas, complete with multiple large windows to flood the home with natural light and invite the breeze
- Well appointed kitchen with 5-burner gas cooktop, oven, dishwasher, generous walk-in pantry, fridge space, feature pendant lighting, soft close drawers and plenty of storage cupboards
- Separate lounge/media room at the front of the home
- Downstairs powder room with toilet
- Large laundry with storage cupboards
- Ducted air-conditioning throughout
- Upgraded 2.7m ceilings throughout
- Epoxy flooring in garage
- Rear Garage Door
- Town gas connection

Upstairs:

- 4 large bedrooms with fly screens, ducted air-conditioning, fans, built-in wardrobes and blinds
- Large master bedroom with a spacious walk-in robe and modern ensuite
- Ensuite is complete with an oversized shower + two shower heads, toilet and spacious double floating vanity with ample bench space
- Incredible sunset views across Providence from the master balcony
- Main bathroom with oversized shower, floating vanity, bath and separate toilet
- Central linen closet

Outside:

- Stunning 8m x 4.5m heated fibreglass mineral pool
- Pool fountain feature

- Programmable colour-change LED pool lighting
- Pool cover
- Large pergola with sun shade, perfect for entertaining
- Alfresco area with electric blinds that can enclose the patio
- 4 x hard-wired Swann security cameras
- 6kW Solar System
- NBN connection
- Storage shed

Location:

This beautiful home is located in the visionary new Providence Community, conveniently just off the Centenary Highway. As one of the largest growth areas in South East Queensland, Providence is a fantastic mix of community spirit and "at-your-doorstep" convenience, making it the ideal place to raise your growing family.

- 5 minute walk to the Ripley Valley State School
- 5 minute walk to the Ripley Valley State Secondary College
- 5 minute walk to the local Café and Splash'n'Play children's park
- 5 minute walk to the proposed South Ripley Town Centre and Medical Precinct
- 5 minute drive to Ripley Coles Shopping Centre
- 15 minute drive to Orion Springfield Town Centre
- 15 minute drive to Springfield Central Train Station
- 20 minute drive to Ipswich
- 45km* to the heart of the Brisbane CBD

11 Danbulla is best viewed in person - please contact Vanya to arrange a private inspection, or we'll see you at the next open home!

Disclaimer:

Ray White Ripley has taken all reasonable steps to ensure that the information in this advertisement is true and correct but accepts no responsibility and disclaims all liability in respect to any errors, omissions, inaccuracies or misstatements contained. Prospective purchasers should make their own enquiries to verify the information contained in this advertisement.