

11 Field Street, Beaconsfield, WA 6162

MINT
REAL ESTATE

House For Sale

Wednesday, 26 June 2024

11 Field Street, Beaconsfield, WA 6162

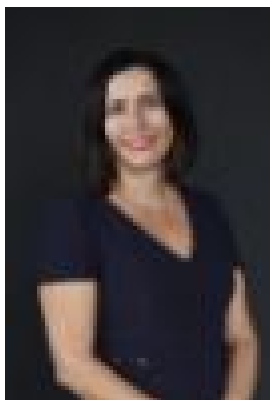
Bedrooms: 4

Bathrooms: 1

Parkings: 2

Area: 789 m2

Type: House



Marisa Rifici
0432729620

NEW TO MARKET

Discover an amazing opportunity with this charming 1959-built home, featuring beautiful Jarrah floorboards, high ceilings, and modern conveniences. Situated on a generous 789sqm block, this classic residence is perfect for families seeking proximity to Fremantle. Upon entry, you're greeted by a spacious living area, accompanied by three adjacent bedrooms and the main bathroom. The centrally located kitchen opens to an additional living room and a practical laundry area, featuring a separate toilet and an extra shower. The large main bedroom is conveniently separated from the other bedrooms, offering enhanced privacy. The expansive backyard features a lovely Jacaranda tree and thriving lemon, olive, and orange trees, providing plenty of room for kids to play and pets to roam. Additionally, the abundance of extra parking is ideal for a boat, trailer, or caravan. Ideally located just a short distance from vibrant South Beach, this inviting home offers easy access to coastal delights and serene seaside living. Families will appreciate the convenience of nearby primary and secondary schools, including the esteemed Fremantle College, ensuring an excellent educational environment for children. Embrace a vibrant community lifestyle with popular parks and playgrounds nearby, perfect for outdoor enjoyment. The beloved Sunday Freo Farmers Market, renowned for its fresh produce and lively atmosphere, is also just around the corner. Don't miss out on this exceptional opportunity to own a piece of classic charm in a highly sought-after location.

- Extra large powered shed
- 300L Solahart Solar Hot Water System
- Reverse Cycle Air-conditioning - Loungeroom & Main Bedroom
- Automatic Electric Gate - Remote Control & Keypad Access
- Brand New dishwasher
- 2 showers
- Reticulated front garden

Rates & Local Information
Water Rates: \$1,687.56 (2022/23)
City of Fremantle: \$2,761.40 (2023/24)
Zoning: R20
Primary School Catchment: Beaconsfield Primary School and Winterfold Primary School
Secondary School Catchment: Fremantle College
For more information please call Marisa Rifici on 0432 729 620

*PLEASE NOTE: While every effort has been made to ensure the given information is correct at the time of listing, this information is provided for reference only and is subject to change. It is recommended that you conduct your own due diligence before making any decisions based on this information.