

**11 Holdsworth Dr, Narellan Vale, NSW, 2567**



**House For Sale**

Tuesday, 29 October 2024

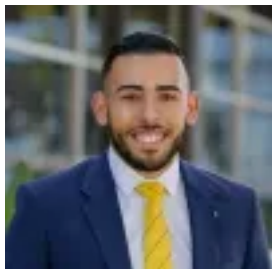
11 Holdsworth Dr, Narellan Vale, NSW, 2567

**Bedrooms: 4**

**Bathrooms: 2**

**Parkings: 2**

**Type: House**



Mohamed Lababidi

## Your Dream Home Awaits !

Welcome to 11 Holdsworth Drive, Narellan Vale-a delightful single-story home offering a blend of comfort and practicality. This well-kept property features four spacious bedrooms and two modern bathrooms, ensuring ample space for family living. The open-plan living area integrates seamlessly with the contemporary kitchen, making it an excellent space for both relaxation and entertaining. Situated on a generous 602sqm block, the home also includes a double-car garage and a beautifully landscaped backyard, perfect for outdoor activities or future enhancements. Located in a serene neighborhood, this home provides a perfect balance of modern living and peaceful surroundings.

Ideally located, 11 Holdsworth Drive, Narellan Vale offers exceptional convenience with its central proximity to a range of facilities and amenities. Residents will enjoy easy access to local shopping centers, dining options, and recreational areas, all within a short drive. The property is also situated within a sought-after school catchment area, ensuring that educational facilities are just moments away. This central location not only enhances everyday living with its accessibility to essential services but also provides a well-connected lifestyle for families seeking both comfort and convenience.

### Key Features Include

- Ample Kitchen Storage and Bench Space
- Ducted Airconditioning
- Built in Wardrobes
- Multiple Living Areas
- Outdoor Patio/ Entertainment Area
- Side Access
- Double Car Garage With Drive Through Access
- Additional Space for Workshop in Garage

### Location Via Google Maps:

- Narellan Vale Public School - 150m
- Elizabeth Macarthur High School - 700m
- St Clares Narellan Vale - 700m
- Magdalene Catholic College -3.9km
- Mount Annan Marketplace - 2.0km