

11 Winder Street, Marsden Park, NSW 2765

Sold House

Friday, 1 September 2023



11 Winder Street, Marsden Park, NSW 2765

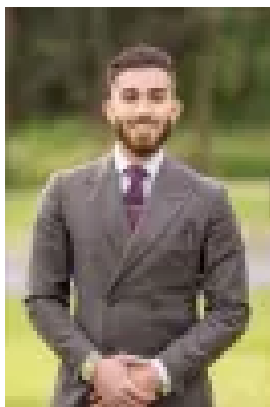
Bedrooms: 4

Bathrooms: 2

Parkings: 2

Area: 350 m2

Type: House



Hardii Admin
0298381529

\$1,203,000

Futuristic Paradise, Your Ultra-Modern Dream Home Awaits!Hardii, Kulwinder & Alex of Nirvana Estate Agents present the experience the pinnacle of luxury living in Marsden Park. This remarkable home is ideally situated just steps away from the Elara Shopping Village and in close proximity to local schools. This residence offers an unbeatable location, promising convenience and comfort for families and individuals alike.Elegance meets functionality in this modern home with 4 large bedrooms, all with built-ins. The master suite features an ensuite bathroom. Its open-plan design links the living room, dining area, and gourmet kitchen (incl butlers kitchen), ensuring smooth daily living and entertainment.This home epitomizes Marsden Park luxury on sought-after Winder Street. Don't miss this chance to own a piece of Marsden Park's finest.Property Features:- Master bedroom with walk-in & ensuite in addition to 3 bedrooms all with built-ins- Ducted Air-conditioning EVEN Included Inside Fully Tiled Garage (Perfect to host birthday parties / gatherings and working from home owners)- Porcelain Tiles Throughout Entire Home, No carpet- Downlights Through-out Entire Home- Artificial Grass in Front and Back Lawn for added low-maintenance- Floor to Ceiling Tiles in all Bathrooms- Bosco Oven and Gas Cooktop Appliances, with silent undermount rangehood- Upgraded ASKO Dishwasher (Top price bracket appliance within its category)- Alfresco Area outside with extended Gas Connections & family entertainment- 2 Bathrooms with an Extra Powder Room- Multi-colour LED throughout entire home - Remote Controlled- Mega-sized Touchscreen Upgraded Front Door LockDistance from Local Amenities: *WALKING DISTANCE*- 350m from Northbourne Public School (3 minute Walk)- 700m from Elara Village Shopping Centre (6 minute Walk)- 1.2km from St.Luke's Catholic College (10 minute Walk)- 900m from Elara Park (8 minute Walk)Distance from Local Amenities: *DRIVEABLE*- 7.1km from Schofields Train Station (11 minute drive)- 10.3km from Tallawong Train Station (13 minute drive)- 5.5km from Sydney Business Park (8 minute drive)- Easy Access to Richmond Road and M7Disclaimer:Nirvana Real Estates and its associates gather information from sources believed to be reliable. While we trust its accuracy, we cannot guarantee it.