

111A Primrose Street, Essendon, Vic 3040



Sold House

Tuesday, 2 April 2024

111A Primrose Street, Essendon, Vic 3040

Bedrooms: 2

Bathrooms: 1

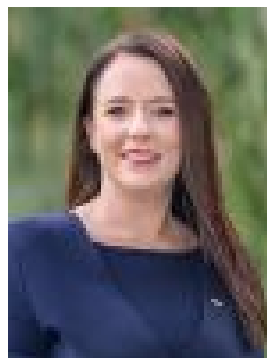
Parkings: 2

Area: 379 m2

Type: House



Kieran Moloney
0393792000



Chauntel Considine
0393792000

Contact agent

Set on a surprisingly deep block of land, this quintessential Art Deco home (on its own title with no shared land or OC fees to pay) delivers a lifestyle of immediate quality and enviable convenience along with endless options to enhance and expand in the future (STCA). Beyond the gorgeous facade with its secure entrance portico, the home's welcoming interior comprises two large bedrooms (both with built-in robes), as well as a spotless bathroom and separate WC. Adding to the appeal is a wide central living room flowing through to the open dining area adjoined by a neat kitchen complete with dishwasher and gas cooktop. Other fine features include ducted heating, solar power, large European laundry, high Art Deco ceilings and solid hardwood floors, plus a substantial backyard with undercover patio and lock-up garage/workshop via the gated side drive. A short stroll to the open spaces of Montgomery Park along with popular cafes, Albion Street buses and Pascoe Vale Road trams, it also offers easy access to Essendon Station, Queens Park, Puckle Street's vibrant retail precinct and the area's renowned schools.