

**113 Victoria Street, Goulburn, NSW 2580**

**Raine&Horne.**

**House For Sale**

Friday, 12 July 2024

**113 Victoria Street, Goulburn, NSW 2580**

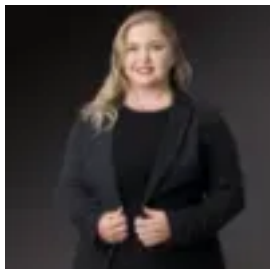
**Bedrooms: 3**

**Bathrooms: 2**

**Parkings: 2**

**Area: 671 m2**

**Type: House**



Peta Beadman

0424164676

**\$699,000**

Welcome to 113 Victoria Street Goulburn, a stunning 3-bedroom, 2-bathroom house that is sure to impress. This property boasts a spacious and modern design, with plenty of natural light and stylish finishes throughout. As you enter the property, you will be greeted by an open plan entrance leading to a large and inviting living area that is perfect for relaxing with family and friends. The modern kitchen efficiently uses space to maximise functionality and storage. It offers quality appliances and plenty of bench space for preparing delicious meals. The floorplan also offers a separate dining room with air conditioning and a cosy fireplace. The bedrooms are generously sized and the master bedroom features a contemporary ensuite, and walk in robe. Outside, you will find a low maintenance yard and outdoor entertaining area, perfect for enjoying the sunny Goulburn weather. The property also features a powered double garage with rear lane access, providing ample space for your vehicles, or use as a workshop. Located in a highly sought-after part of Goulburn, this property is close to local shops, schools, and public transport. With so much to offer, this property is sure to impress and won't last long on the market. Don't miss out on the opportunity to make this stunning property your own. Contact us today to arrange an inspection and see all that this property has to offer. Features include:

- Great street appeal with tidy frontage
- Off street parking
- Under cover patio
- Three spacious bedrooms
- Master bedroom with ensuite and walk in robe
- Separate living and dining
- Functional kitchen with dishwasher, electric cooking and plenty of storage
- Main bathroom with bath
- Rear outdoor entertaining
- Oversized garage with power and rear lane access