

**11C Stirling View Drive, Lange, WA, 6330**



**House For Sale**

Wednesday, 25 September 2024

11C Stirling View Drive, Lange, WA, 6330

**Bedrooms: 3**

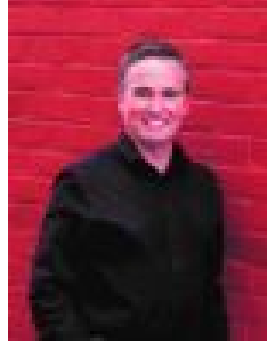
**Bathrooms: 2**

**Parkings: 2**

**Type: House**



Darren Leslie  
0414888244



Rhett Bull  
0408264309

## **BRAND NEW SPEC HOME NEARING COMPLETION**

There continues to exist strong competition between buyers to procure quality established real estate in the Albany area, which makes this property even more enticing.

Its fast-approaching completion date is between December 2024 and January 2025; however, you have a rare opportunity to secure it now.

The spacious total floor area of the Ryde Building Company spec home is 240.2sqm, which includes the living areas, alfresco deck, double garage and porch entry.

There is also the option to add another room to the plan, if desired.

The home will come finished inside and out from the floor coverings and window treatments to the lighting, kitchen stone benchtops and Fisher and Paykel appliances and alfresco deck. Fencing is also included.

It sits on a level, low-maintenance east-west facing lot just a short walk from a myriad of shopping complexes and near the local high school and Southern Regional TAFE, making it extremely appealing to a wide buyer range.

Smartly-planned and presented, the alluring home features double garage access and a separate media room and elegant master suite, with walk-in robe and separate toilet ensuite direct off the entry.

The fabulous open living and dining area and galley kitchen have been thoughtfully planned.

As you would expect, the family/guest wing reveals the same attention to detail from the laundry with great storage to the nearby two bedrooms with robes and the central in-style bathroom and toilet.

Do not miss out on this rare chance to acquire a quality property prior to completion.

For more detailed information or to arrange a private viewing please contact Darren Leslie on 0414 888 244 or email [darren.leslie@raywhite.com](mailto:darren.leslie@raywhite.com) or Rhett Bull on 0408 264 309 or email [rhett.bull@raywhite.com](mailto:rhett.bull@raywhite.com)