

12 Noah Street, Gisborne, Vic 3437

House For Rent

Friday, 12 July 2024

12 Noah Street, Gisborne, Vic 3437

Bedrooms: 4

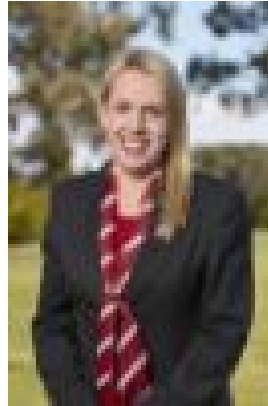
Bathrooms: 2

Parkings: 2

Type: House



Lauren Vicary
0393338800



Natalie Kent
0438311977

\$650 per week

Are you ready to elevate your lifestyle and live in a beautifully designed, energy-efficient home? Look no further! Step inside and be greeted by the perfect blend of modern elegance and functional design. The open living spaces create an inviting atmosphere for you and your family to enjoy. The heart of this home is the kitchen, boasting 20mm stone benchtops, stainless steel appliances including dishwasher, and ample storage with a walk-in pantry. Prepare your favorite meals with ease and entertain in style. The Master Bedroom boasts a WIR and luxury ensuite and the further 3 bedrooms have built in robes and are serviced by the central bathroom with bath and shower. Stay comfortable all year round with the Rinnai reverse cycle ducted AC/heating and LED downlights, which provide energy efficiency and cost savings. The outdoor entertaining area is perfect for those sunny days and al fresco dining, offering a tranquil space for relaxation and gatherings. Features of this home include the Shape Homes Mentone Design, 4 bedrooms, master with ensuite, a fully equipped kitchen with modern stainless steel appliances including a dishwasher, laminate timber flooring, high ceilings, double car garage with internal access and a 6-star energy rating. Located in the beautiful Macedon Ranges, Gisborne is situated approximately 54 km from the Melbourne CBD and is serviced by VLINE trains. Don't miss out on the opportunity to make this house your home. Apply online today and visit one of our scheduled open times! LEASE TERM: 13-15 Month initial term, option for 12 month renewal.* Subject to renter/rental provider agreement INSPECTION: Times subject to change without notice - please check before attending PROPERTY DISCLOSURE: [Click here](#) - PHOTOS: For illustration purposes only, actual home MAY vary slightly