

# 12 Taddor Drive, Cranbourne, Vic 3977

## House For Sale

Wednesday, 19 June 2024



12 Taddor Drive, Cranbourne, Vic 3977

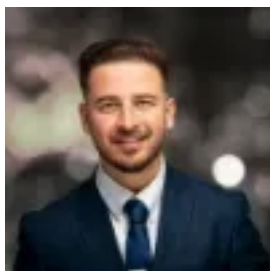
Bedrooms: 3

Bathrooms: 1

Parkings: 2

Area: 545 m2

Type: House



Elias Salimi

0397032460

**\$590,000 - \$635,000**

Located in the heart of Cranbourne, this property offers unparalleled convenience with walking distance access to all essential amenities, including Cranbourne Park and Hunt Club Shopping Centre, Cranbourne Train Station, Cranbourne Secondary College, and Casey Grammar School. Enjoy quick access to South Gippsland Highway, surrounded by numerous parks. Key Features:

- Three bedrooms with a separate toilet and bathroom
- Spacious formal living area with abundant natural light
- Split system air conditioning in the lounge area and master bedroom
- Kitchen equipped with a 900mm gas cooktop, tiled surfaces, and a wall oven
- Generous backyard ideal for children and pets
- Side access suitable for a boat or caravan
- Wooden flooring throughout the house
- Garden shed in the backyard

This property is an excellent opportunity for home buyers, investors, or those looking to downsize. Don't miss out—contact Elias Salimi at 0412 676 898 to schedule an inspection. Photo ID is required for all open inspections. Please note: Every effort has been made to ensure the accuracy of the details in this advertisement. However, we cannot guarantee their correctness. Prospective purchasers are encouraged to take necessary actions to verify relevant information.