

1258 Pacific Hwy, Turrumurra, NSW, 2074



House For Sale

Friday, 9 August 2024

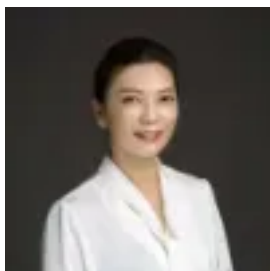
1258 Pacific Hwy, Turrumurra, NSW, 2074

Bedrooms: 5

Bathrooms: 5

Parkings: 4

Type: House



Karen Ge
0298697788

Brand-new Architecturally Striking Luxury Residence

Striking a bold architectural balance between contemporary symmetry and organic contours, this brand-new custom-designed residence presents unforgettable dimensions, and a compelling lifestyle perfectly balanced for executive family living and entertaining.

Distinguished by a brilliant use of full-span double glazing, a seamless indoor-outdoor synergy is anchored by a centred grassed courtyard, complemented by a covered outdoor terrace overlooking a shimmering pool with bordering bushland views.

Crisp white interiors accented with sleek black accent details unfold throughout, enhanced by expansive 5.8 metre voids resulting in a spectacular sense of space, elevating natural openness and flow. Sophisticated automatic curtains feature, with individual ducted air conditioning room control.

Airy bedrooms all provide quality built-in wardrobes, a junior suite incorporates an ensuite, and a deluxe master suite showcases an extravagant walk-in closet complete with custom cabinetry and a luxurious ensuite. Organised around a lavish stone island, a gourmet kitchen delights with a suite of Miele appliances, an integrated fridge and freezer, plus a galley-style butler's pantry for effortless entertaining and connection to open-plan dining and living spaces.

Be the first to relish the opportunity to live in this opulent and modern new home, enviably positioned within walking distance of Turramurra Train Station, village shops and eateries as well as elite Sydney schools.

Main Features:

- Architect-designed custom residence
- Brand new double brick construction on a concrete slab, set on a north-facing 936.2sqm
- Boasts a sprawling light and airy floor area of over 354m²
- Frosted glass entry door, custom designer lighting, video intercom, security
- Breathtaking 5.8metre voids throughout coupled with 2.6m ceilings
- Zoned ducted air conditioning with individual room control
- Electric soft sheer and block-out curtains with hidden double-track
- Double-glazed commercial glass used throughout
- Centred grassed courtyard, viewed from three sides of the home
- Upper level includes a second lounge room, junior suite with ensuite, master suite with ensuite, two bedrooms and a main bathroom
- A spectacular stone island kitchen is fitted with a host of Miele appliances; integrated fridge and freezer, oven, steam oven, 900mm gas cooktop and semi-integrated dishwasher
- Butler's pantry runs the entire length of the kitchen with undercabinet lighting, a Miele gas cooktop and an under-mount sink
- Custom cabinetry throughout delivers enviable storage solutions for neat, streamlined living with soft-touch fixtures
- Lounge room flanked by full stretch glazing looking into grassed courtyard and out to alfresco dining
- Outdoor kitchen is equipped with a sink, plumbed gas and plenty of storage
- Glass balustrades along the terrace provide a seamless connection, with views over the inground pool and backyard to the neighbouring bushland.
- Master suite with walk-in wardrobe featuring a skylight and custom fittings to include jewellery, watch and tie drawers, pant hangers
- Master ensuite with walk-in shower, double vanity, double LED touch mirrors with customizable lighting, separate privacy toilet
- Main bathroom showcases a premium fluted freestanding bathtub; fluted details continue on the double vanity with push touch drawers, feature chevron laid tiles, double LED touch mirrors with customizable lighting, walk-in shower

Location Features:

- Within catchment for Pymble Public School and St Ives High School
- 800m to Turramurra Station and village shops, cafes and restaurants
- 1km to Coles Turramurra
- 1.1km to Pymble Station and shops
- Convenient to Macquarie Shopping Centre and Macquarie University
- Easy access to Sacred Heart Catholic Primary School, Pymble Ladies College, Wahroonga Adventist School, Normanhurst Boys, Loreto Normanhurst, Barker College, St Leo's Catholic College, Abbotsleigh and Knox Grammar

Disclaimer: All information provided has been gathered from sources we deem to be reliable. However, we cannot guarantee its accuracy and any interested persons should rely upon their own enquiries.