

**13 Clement Court, Mill Park, Vic 3082**



**House For Sale**

Wednesday, 3 July 2024

13 Clement Court, Mill Park, Vic 3082

**Bedrooms: 3**

**Bathrooms: 2**

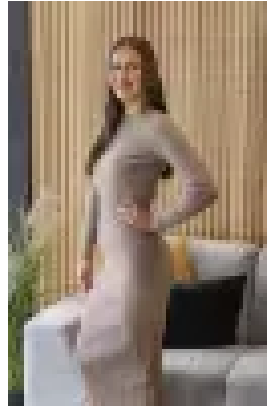
**Parkings: 4**

**Area: 602 m2**

**Type: House**



Jay Moxon  
0391111707



Imogen Hammond  
0391111707

**ESR: \$700,000 - \$770,000**

Discover the epitome of convenient living in this meticulously kept home, offering seamless access to Epping and South Morang Train stations, Pacific Epping, Westfield Plenty Valley, esteemed schools and picturesque parklands. This well-proportioned gem is a testament to both style and practicality. Featuring three generously-sized bedrooms, including a master with ensuite and walk-in robe, and built-in robes to the remaining two bedrooms. As you enter, you'll be greeted by a spacious lounge and an adjacent formal dining area. The well-appointed timber kitchen showcases ample bench space and abundant cabinetry, complemented by an adjacent meals/family area. Step outside to a sizable rear yard complete with a delightful patio area. Extra features include year-round comfort with ducted heating, cooling via split system and wall heater, ample storage options, decorative cornices, kitchenette in garage, outdoor toilet, striking flooring, roller shutters, ducted vacuum, NBN, alarm, meticulously landscaped gardens and an oversized garage with further secure off street parking. Don't miss the opportunity to make this your home – enquire today!